

CIGWELD

AN ESAB BRAND

MIG

WITH SINGLE &
DOUBLE PULSE

STICK

WITH STICK PULSE

TIG

WITH TIG PULSE



DESIGNED
& TESTED
IN AUSTRALIA
FOR OVER 100 YEARS

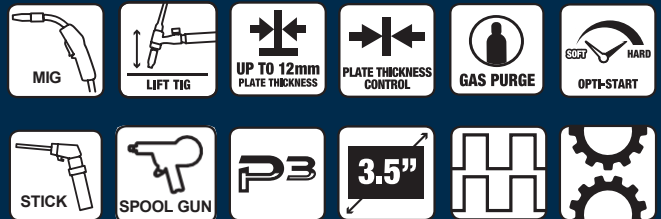
BLUEVENOM XF200P3



MULTI PROCESS MIG-STICK-TIG
WELDING INVERTER with
3 PULSE TRANSFER MODES



MIG SYNERGIC PLATE
THICKNESS SELECTION
using SINGLE & DOUBLE
PULSE MIG

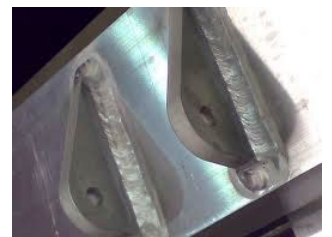


THE BEST LOOKING WELDS A MIG WELDER CAN DELIVER...

- Get your adrenaline pumping with the BlueVenom XF200P³ – a compact, robust mean machine with 3 x Pulse modes: Single & Double Pulse MIG, STICK Pulse and TIG Pulse!
- Ready to rock out of the box for welding Aluminium, this predator packs impressive features and welding performance made easy to suit the serious welding enthusiast to the welding pro.
- The XF200P³ also comes packed with the right liner, inlet guide and feed rollers for hard (steel and stainless) wires as well.
- Release your inner Welditude™ with pre-installed Synergic Quickset MIG (Single & Double Pulse) programs! Simply choose your material and gas combination (unless you're using gasless), wire diameter and **dial up the plate thickness** you're welding and you're ready to go!
- Navigate with ease through the intuitive 3.5" full colour display to custom set values to get the most out of your welds – from Voltage Trim and Adjustable Burnback to Hard and Soft start tweaks (Opti-Start Technology) the XF200P³ doesn't hold back!
- Weighing a mere 13.2kg, this portable beast will have you welding in any pulse mode you like! To make things even better it's equipped with a 2x roll (cogged) **all driven** wire drive system for smooth and effortless wire feedability and is compatible with Spool Gun, TIG foot control and Dial Remote TIG torch!

EASY TO SET for PROFESSIONAL RESULTS

- QuickSet, Plate Thickness Settings, allow simple set-up in a flash
- Aluminium Pulse MIG Welding delivers excellent thin metal welding results that can be customised to allow adjustable "ripple spacing" (dimes) to achieve MIG-Welds that look like TIG-Welds!
- Produce terrific welding results from 230V/240V x 15A upgraded power
- You can weld most metals including Mild Steel, Stainless Steel, Aluminium and Bronze
- Fine tuning of Pre-Set Wire Speed & Volts / Full control over manual settings
- Recommended MIG & TIG welding thickness range 0.6mm – 12mm
- Recommended STICK welding thickness range 1.6mm – 16mm
- Spool Gun compatible, great for Aluminium (sold separately)
- Welding wire size selection & metal/material selection
- Suitable for 100mm and 200mm Diameter Spools
- MIG Gasless and MIG Gas Shielded
- Factory Settings reset feature



CIGWELD Data Sheet **BlueVENOM XF200P³ V2-2023**
CIGWELD Pty Ltd An ESAB Brand.
www.cigweld.com.au

CIGWELD
AN ESAB BRAND



DESCRIPTION

The BlueVENOM XF200P³ is the machine for the serious welding enthusiast, tradesperson or professional who need to fabricate and weld light structures that require TIG-Like welds on Aluminium, Stainless Steel, Bronze or Steel projects, but need the welding speed and ease-of-use of the MIG Process. Suitable for use at maintenance departments, farm/home workshops, jobsites and marine repair/service centers without compromising on price for excellent results! With the avid welder in mind, CIGWELD have introduced "Opti-Start", a feature that allows the user to customise their starting arc characteristics through Soft and Hard Start controls. Additionally, this machine has the following features built-in:

- 2 x Roll All-Driven (top & bottom) Wire Drive system
- MIG Single and Double Pulse
- MIG Adjustable Wire Burnback & Inductance
- MIG Adjustable Soft & Hard Start (Opti-Start)
- MIG Wire Inch button | MIG Gas Purge Function
- MIG Side door wire installation, side loader
- MIG Anti de-spooling safety feature
- MIG Spool Gun Compatible
- STICK and STICK-PULSE
- STICK with **Voltage Reduction Device (VRD)** built-in for Safe Welding
- STICK Adjustable Hot Start | STICK Adjustable Arc Force | STICK Anti-Stick
- TIG DC-Lift and TIG-PULSE DC-Lift
- TIG Foot Control Compatible
- TIG Dial Remote Torch Compatible
- Thermal Overload Protection

WARRANTY PERIOD

2-Year conditional warranty. See terms and conditions at cigweld.com.au or in the Operating Manual, included with the machine.



PROFESSIONAL RESULTS from a SMALL MACHINE

The BlueVENOM XF200P³ delivers a maximum output of 200 Amps DC in MIG and TIG Modes, which means the machine is capable of welding metals from 0.6mm up to 12mm. In STICK mode (195A) the machine is capable of welding metals from 1.2mm up to 16mm in thickness.



ORDERING DETAILS

BlueVENOM XF200P³ Package.



P/N: W1400200



CIGWELD Data Sheet **BlueVENOM XF200P³ V2-2023**
CIGWELD Pty Ltd An ESAB Brand.
www.cigweld.com.au

TECHNICAL SPECIFICATIONS

Power Supply (Voltage):	Single-Phase 230V/240V +/- 10%
Australian Standard:	AS 60974.1:2020
Nominal Supply Frequency:	50/60Hz
Supply Lead and Plug supplied:	15 Amp
Minimum Single Phase Generator Recommendation:	12kVA (at 0.8 Power Factor) at Max Amps
Amperage Range (MIG):	30 – 200A
Voltage Range (MIG):	15.5 - 24.0V
MIG (GMAW) Duty Cycle @ 40°C, 10 minutes:	200 Amps @ 15% 100 Amps @ 60% 77 Amps @ 100%
STICK (MMAW) Duty Cycle @ 40°C, 10 minutes:	195 Amps @ 10% 80 Amps @ 60% 62 Amps @ 100%
TIG (GTAW) Duty Cycle @ 40°C, 10 minutes:	200 Amps @ 15% 100 Amps @ 60% 77 Amps @ 100%
Nominal DC Open Circuit Voltage in MIG Mode:	67V
Open Circuit Voltage (VRD On) STICK Mode:	<35V
Weight of Power Source:	13.4kg
Power Source Dimensions (mm):	L: 495 x W: 220 x H: 335
Weight of Full Package:	21.7kg
Full Package Dimensions (mm):	L: 580 x W: 310 x H: 395
Protection Class:	IP 21S



PACKAGE CONTENTS

- BlueVENOM XF200P³ Power Source
- CMGBZ24E3 MIG Gun 3m Euro quick connector set up with an Aluminium Liner, plus a spare Steel liner is supplied for hard wires
- Work Clamp with 3m Lead
- Twist Lock Electrode Holder with 3m Lead
- 3 x Feed Rolls: 0.8/0.9mm Gasless, 0.9/1.0mm U-Groove for Soft Wires (Fitted), 0.8/0.9mm Solid Wires.
- 2m Argon Gas Hose and Gas Regulator/Flowmeter
- Includes Yellow Nylon Inlet Guide for use on Soft Alloy Wires and a Spring Steel Inlet Guide for Hard Wires
- Operating Manual

CIGWELD
AN ESAB BRAND

