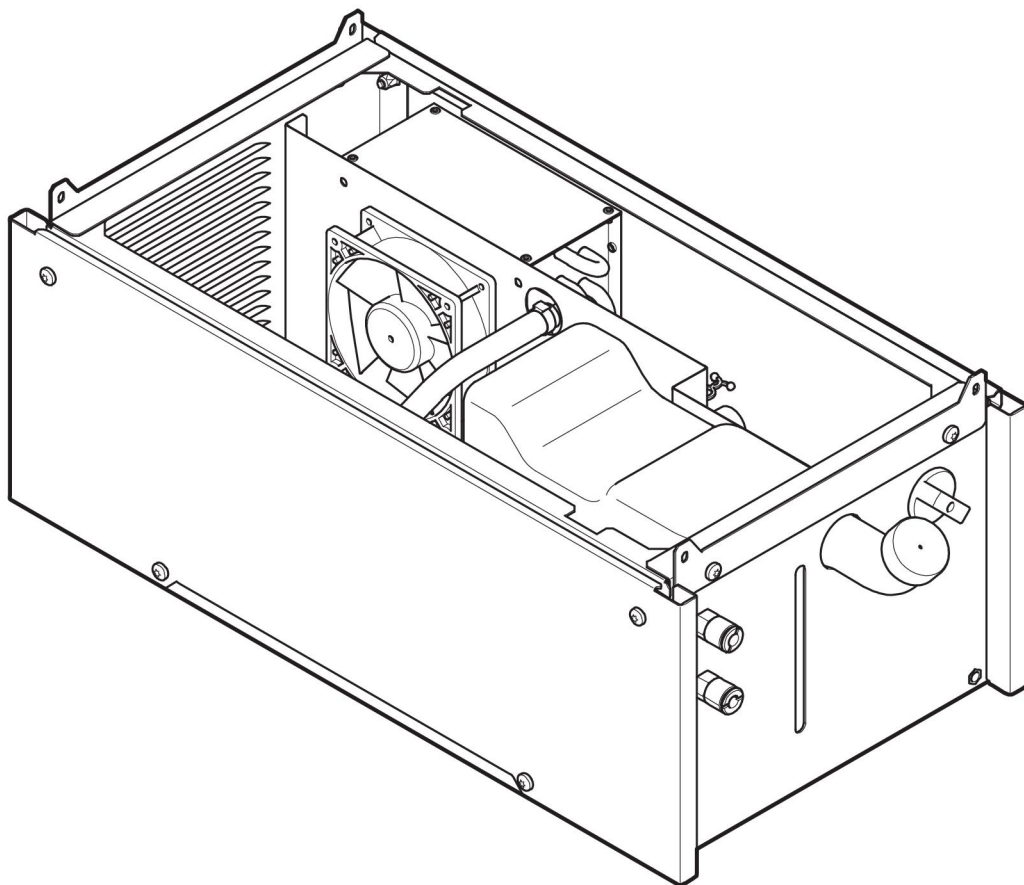


COOL 2



Instruction manual



DECLARATION OF CONFORMITY

According to

The Low Voltage Directive 2006/95/EC, entering into force 16 January 2007

The EMC Directive 2004/108/EC, entering into force 20 July 2007

The RoHS Directive 2011/65/EC, entering onto force 2 January 2013

Type of equipment

Welding cooling system

Type designation

Cool 2, from serial number 324 xxx xxxx (2013 w24)

Cool 2, is a member of the ESAB Warrior™ product family

Brand name or trade mark

ESAB

Manufacturer or his authorised representative established within the EEA

Name, address, telephone No:

ESAB AB
Lindholmsallén 9,
Box 8004,
SE-402 77 Göteborg,
Sweden

Phone: +46 31 50 90 00, Fax: +46 584 411 924

The following harmonised standard in force within the EEA has been used in the design:

EN 60974-1, Arc Welding Equipment – Part 2: Liquide cooling systems

EN 60974-10, Arc Welding Equipment – Part 10: Electromagnetic Compatibility (EMC) requirements

Additional Information: Restrictive use, Class A equipment, intended for use in locations other than residential.

By signing this document, the undersigned declares as manufacturer, or the manufacturer's authorised representative established within the EEA, that the equipment in question complies with the safety requirements stated above.

Date

Gothenburg
14-June-2013

Signature

A handwritten signature in black ink, appearing to read "Stephen Argo". The signature is written in a cursive, flowing style.

Stephen Argo
Clarification

Position

Global Director
Equipment

TABLE OF CONTENTS

1	SAFETY	4
1.1	Meaning of symbols	4
1.2	Safety precautions	4
2	INTRODUCTION	6
2.1	Equipment	6
3	TECHNICAL DATA	7
4	INSTALLATION	8
4.1	Location	8
4.2	Power supply	8
4.3	Installing welding equipment	8
5	OPERATION	9
5.1	Connections and control devices	9
5.2	Usage of the cooling unit	9
5.3	Coolant connection	9
5.4	Coolant pressure controller	9
6	MAINTENANCE	10
6.1	Inspection and cleaning	10
6.2	Filling the coolant	10
7	FAULT TRACING	11
8	ORDERING SPARE PARTS	12
	ASSEMBLY INSTRUCTIONS	13
	DIAGRAM	15
	PUMP DATA	16
	ORDERING NUMBERS	17
	ACCESSORIES	18

1 SAFETY

1.1 Meaning of symbols

As used throughout this manual: Means Attention! Be Alert!



DANGER!

Means immediate hazards which, if not avoided, will result in immediate, serious personal injury or loss of life.



WARNING!

Means potential hazards which could result in personal injury or loss of life.



CAUTION!

Means hazards which could result in minor personal injury.



WARNING!

Before use, read and understand the instruction manual and follow all labels, employer's safety practices and Safety Data Sheets (SDSs).



1.2 Safety precautions

Users of ESAB equipment have the ultimate responsibility for ensuring that anyone who works on or near the equipment observes all the relevant safety precautions. Safety precautions must meet the requirements that apply to this type of equipment. The following recommendations should be observed in addition to the standard regulations that apply to the workplace.

All work must be carried out by trained personnel well-acquainted with the operation of the equipment. Incorrect operation of the equipment may lead to hazardous situations which can result in injury to the operator and damage to the equipment.

1. Anyone who uses the equipment must be familiar with:
 - its operation
 - location of emergency stops
 - its function
 - relevant safety precautions
 - welding and cutting or other applicable operation of the equipment
2. The operator must ensure that:
 - no unauthorised person is stationed within the working area of the equipment when it is started up
 - no-one is unprotected when the arc is struck or work is started with the equipment
3. The workplace must:
 - be suitable for the purpose
 - be free from drafts

4. Personal safety equipment:
 - Always wear recommended personal safety equipment, such as safety glasses, flame-proof clothing, safety gloves
 - Do not wear loose-fitting items, such as scarves, bracelets, rings, etc., which could become trapped or cause burns
5. General precautions:
 - Make sure the return cable is connected securely
 - Work on high voltage equipment **may only be carried out by a qualified electrician**
 - Appropriate fire extinguishing equipment must be clearly marked and close at hand
 - Lubrication and maintenance must **not** be carried out on the equipment during operation



WARNING!

Arc welding and cutting can be injurious to yourself and others. Take precautions when welding and cutting.

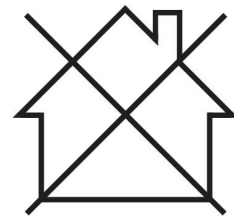
MALFUNCTION - Call for expert assistance in the event of malfunction.

PROTECT YOURSELF AND OTHERS!



CAUTION!

Class A equipment is not intended for use in residential locations where the electrical power is provided by the public low-voltage supply system. There may be potential difficulties in ensuring electromagnetic compatibility of class A equipment in those locations, due to conducted as well as radiated disturbances.



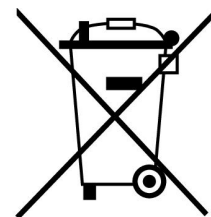
NOTE!

Dispose of electronic equipment at the recycling facility!

In observance of European Directive 2012/19/EC on Waste Electrical and Electronic Equipment and its implementation in accordance with national law, electrical and/or electronic equipment that has reached the end of its life must be disposed of at a recycling facility.

As the person responsible for the equipment, it is your responsibility to obtain information on approved collection stations.

For further information contact the nearest ESAB dealer.



ESAB has an assortment of welding accessories and personal protection equipment for purchase. For ordering information contact your local ESAB dealer or visit us on our website.

2 INTRODUCTION

Cooling unit **COOL 2** is intended for cooling water-cooled MIG/MAG welding torches.

Accessories for the product can be found in the "ACCESSORIES" chapter of this manual.

2.1 Equipment

The cooling unit is supplied with installation instructions and instruction manual.

3 TECHNICAL DATA

COOL 2	
Power consumption	40 V AC / 2A, 50/60 Hz
Cooling power	1 kW
Noise (Constant sound pressure when idling)	< 70 dB(A)
Coolant	"ESAB's ready mixed coolant, see the "ACCESSORIES" chapter.
Coolant quantity	4.5 l
Maximum water flow	1.8 l/min
Max pressure lift for torch Q_{max}	4.6 bar
Operating temperature	-10° to +40°C
Transportation temperature	-20° to +55°C
Dimensions (l × w × h)	680 × 330 × 230 mm
Weight empty	15 kg
Enclosure class	IP23

The cooling unit is rated 500 A at 60% duty cycle at 77°F (25°C) ambient temperature.

Enclosure class

The **IP** code indicates the enclosure class, i.e. the degree of protection against penetration by solid objects or water.

Equipment marked **IP23** is intended for indoor and outdoor use.

4 INSTALLATION

The installation must be carried out by a professional.



CAUTION!

This product is intended for industrial use. In a domestic environment this product may cause radio interference. It is the user's responsibility to take adequate precautions.

4.1 Location

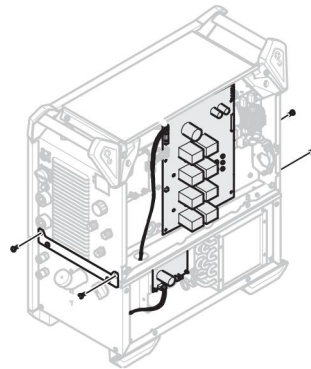
Position the cooling unit such that its cooling air inlets and outlets are not obstructed.

4.2 Power supply

The cooling unit is supplied from the power source, see the "OPERATION" chapter.

4.3 Installing welding equipment

Installation instruction for this product can be found in the "ASSEMBLY INSTRUCTIONS" chapter".

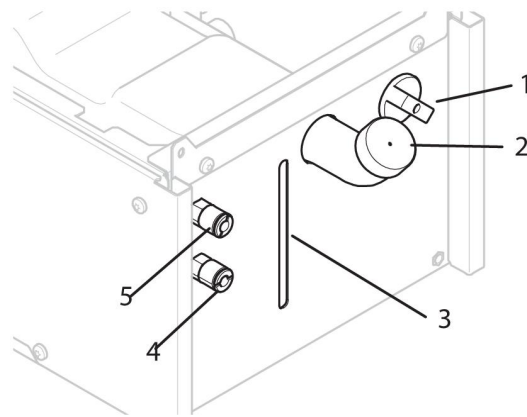


5 OPERATION

General safety regulations for handling the equipment can be found in the "SAFETY" chapter of this manual. Read it through before you start using the equipment!

5.1 Connections and control devices

1. Switch for On/Off
2. Coolant filling
3. Min/max of coolant
4. Connection RED for coolant (return) to cooling unit
5. Connection BLUE for coolant from cooling unit



5.2 Usage of the cooling unit



CAUTION!

Important! Turn OFF the cooling unit when welding MMA or using air cooled MIG/TIG welding torches to avoid excessive wear of the pump. Otherwise the pump will work against a closed valve.

Turn ON the cooling unit when using a water cooled MIG welding torch to avoid damages on the cable set.

5.3 Coolant connection

For problem free operation it is recommended that the height from the cooling unit to the water-cooled MIG/MAG torch is a maximum of 8.5 m.

5.4 Coolant pressure controller

The pump has an enclosed pressure relief valve. The valve opens gradually when the pressure is too high. This can occur if a hose is folded, which causes the flow to fail or stop.

6 MAINTENANCE



NOTE!

Regular maintenance is important for safe and reliable operation.



CAUTION!

Only those persons who have appropriate electrical knowledge (authorized personnel) may remove the safety plates.



CAUTION!

All warranty undertakings from the supplier cease to apply if the customer attempts any work to rectify any faults in the product during the warranty period.

6.1 Inspection and cleaning



WARNING!

The mains supply must be disconnected before cleaning.

Dust, grinding, swarf etc

The air stream through the cooling unit carries particles that become trapped in the cooling element, particularly in dirty working environments. This results in reduced cooling capacity. For this reason, blow clean using compressed air at regular intervals.

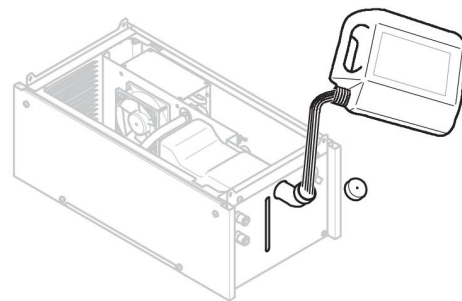
The coolant system

The recommended coolant must be used in the system otherwise clumps can be created that block the pump, water connections or elements. Flushing can only be performed via red water connection. Then drain the tank manually, i.e. empty via the tank's filling hole.

6.2 Filling the coolant

Only use ESAB's ready mixed coolant, see the "ACCESSORIES" chapter.

- Fill with coolant. (The fluid level must not exceed the upper marking but neither must it be below the lower marking.)



NOTE!

Coolant must be topped up if connecting a welding torch or coolant hoses that are 5 metres in length or longer. When adjusting the water level by topping up, the coolant hoses do not need to be disconnected.



CAUTION!

The coolant must be handled as chemical waste.

7 FAULT TRACING

Try these recommended checks and inspections before sending for an authorized service technician.

Type of fault	Corrective action
Poor cooling effect	<ul style="list-style-type: none">• Clean the cooling element using compressed air.• Check the coolant level.• Check that the on/off switch on the cooling unit is set to ON.

8 ORDERING SPARE PARTS



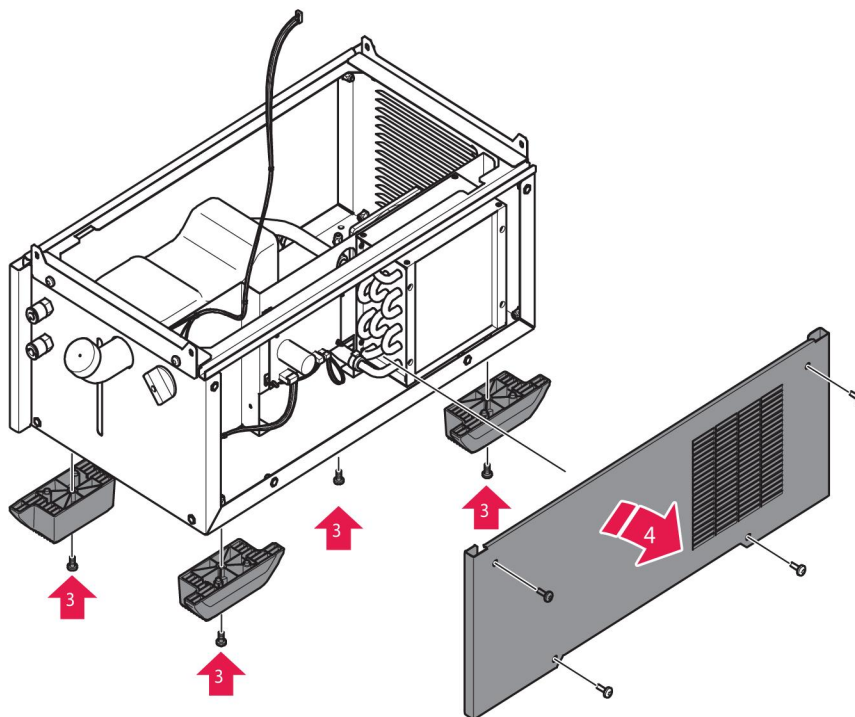
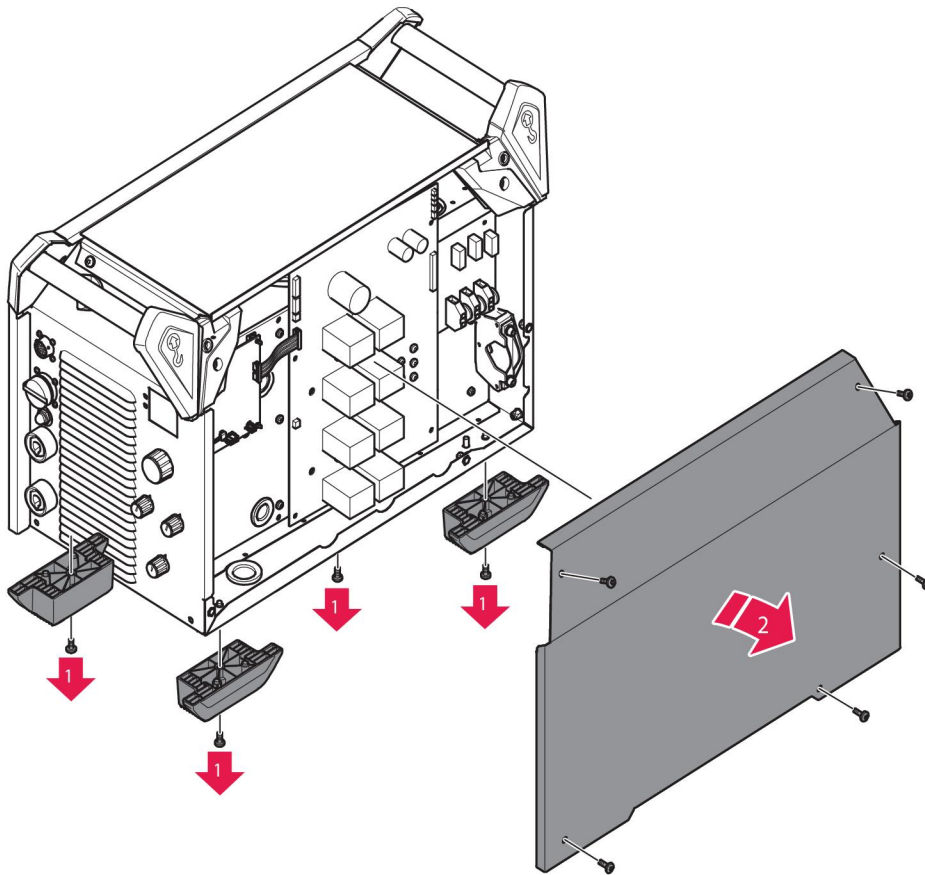
CAUTION!

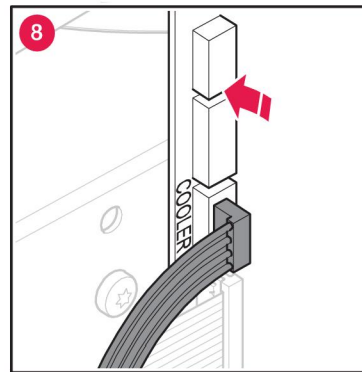
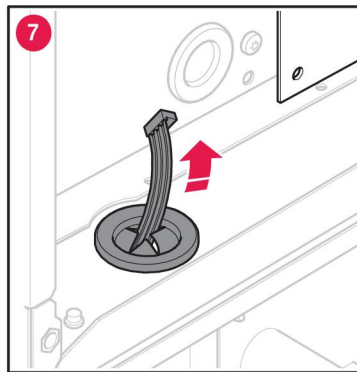
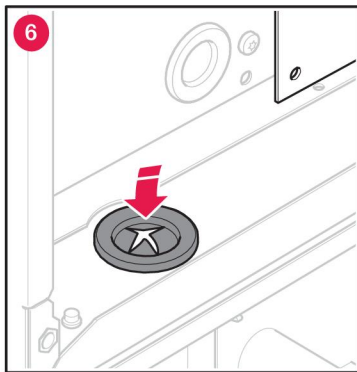
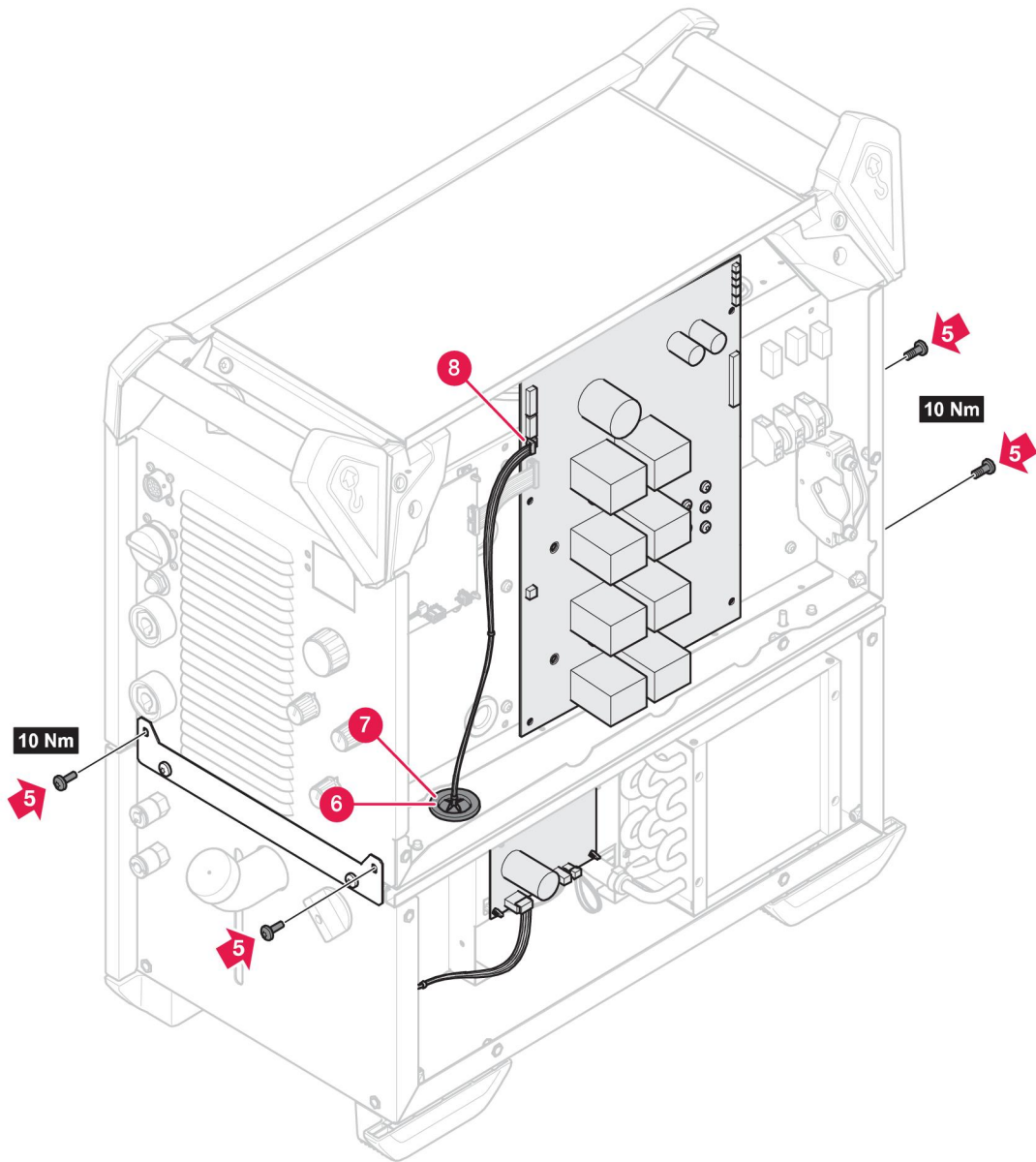
Repair and electrical work should be performed by an authorised ESAB service technician. Use only ESAB original spare and wear parts.

The COOL 2 is designed and tested in accordance with International and European standards IEC/EN 60974-2 and IEC/EN 60974-10, Canadian standards CAN/CSA-E60974-1 and US standards ANSI/IEC 60974-1. On completion of service or repair work, it is the responsibility of the person(s) performing the work to ensure that the product still complies with the requirements of the above standards.

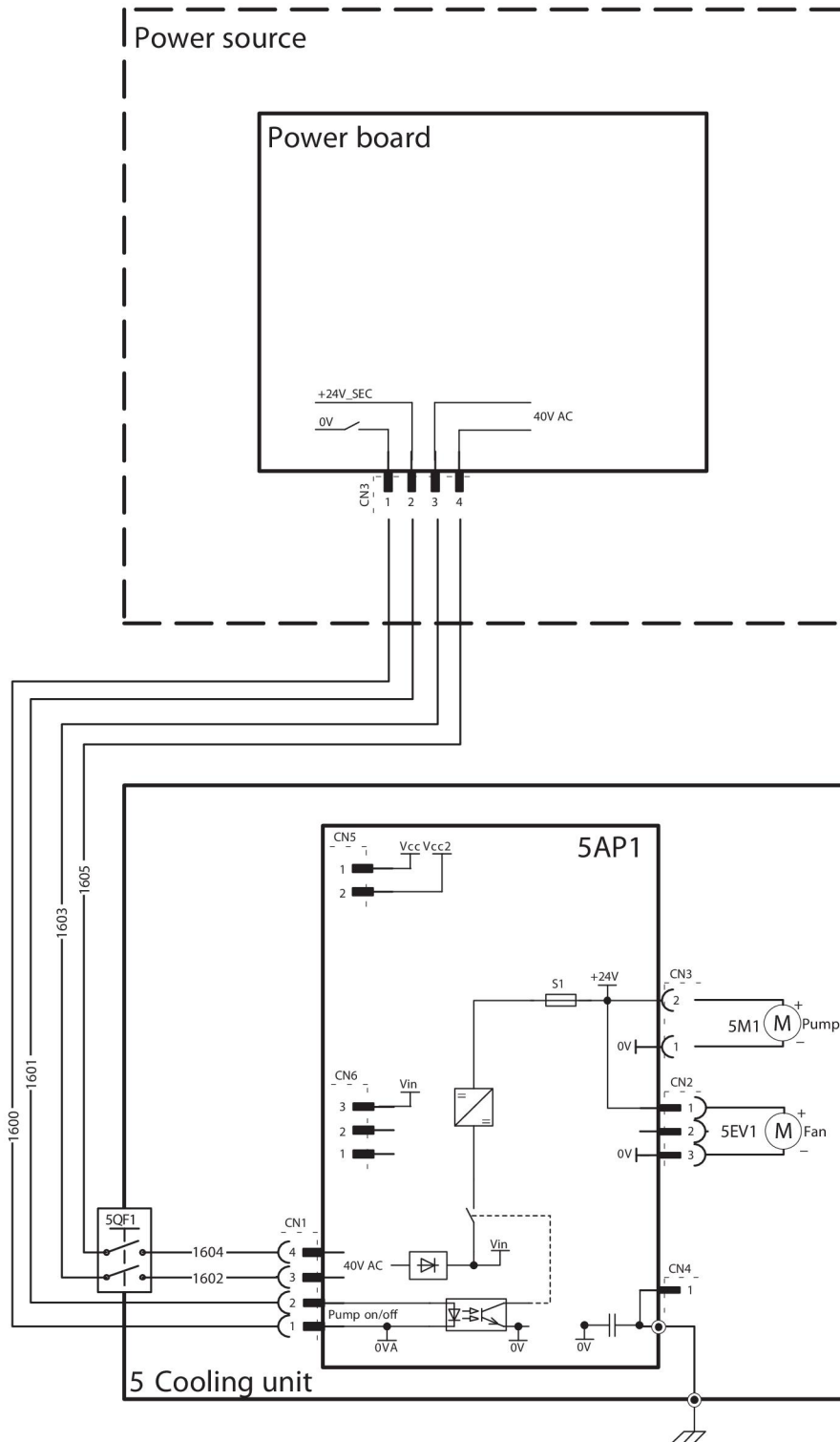
Spare parts and wear parts can be ordered through your nearest ESAB dealer, see the back cover of this document. When ordering, please state product type, serial number, designation and spare part number in accordance with the spare parts list. This facilitates dispatch and ensures correct delivery.

ASSEMBLY INSTRUCTIONS

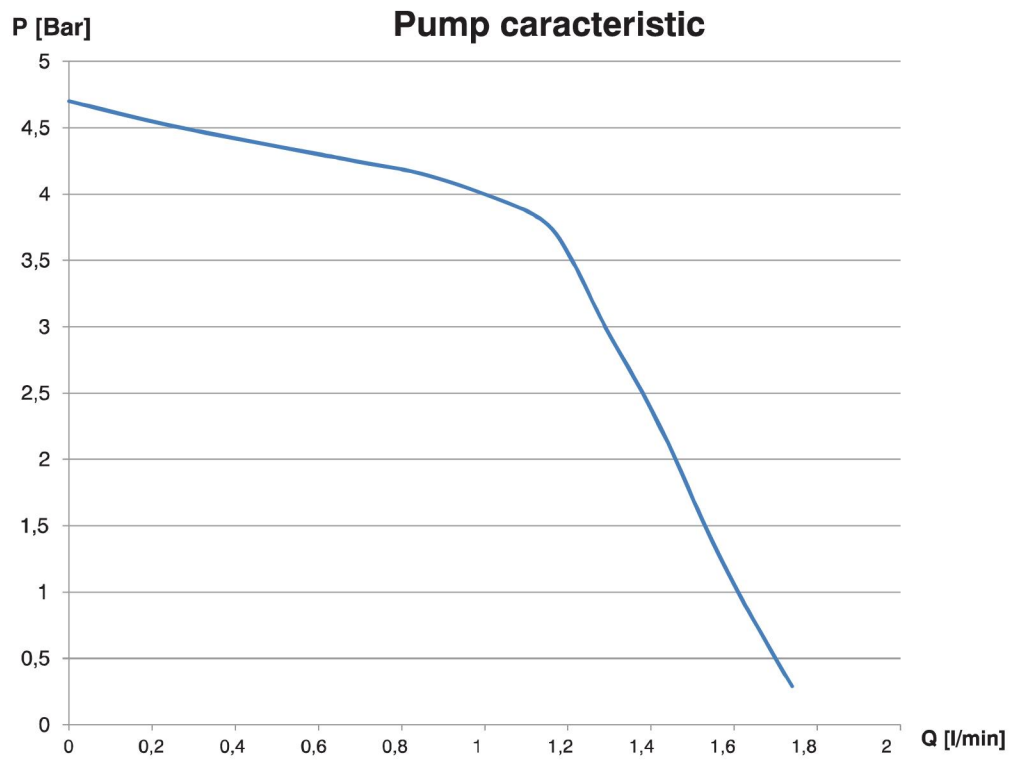




DIAGRAM



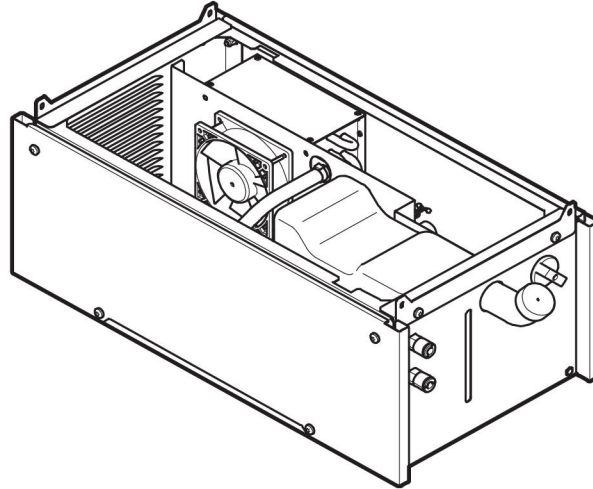
PUMP DATA



P = Pump pressure,

Q = Flow rate,


ORDERING NUMBERS



Ordering Number	Denomination	Type
0465 427 880	Cooling unit	COOL 2
0459 839 092	Spare parts list	COOL 2

Technical documentation is available on the Internet at www.esab.com.

ACCESSORIES

0465 720 002	ESAB ready mixed coolant (10 l / 2.64 gal) Use of any other cooling liquid than the prescribed one might damage the equipment. In case of such damage, all warranty undertakings from ESAB cease to apply.	
--------------	--	---

ESAB subsidiaries and representative offices

Europe

AUSTRIA

ESAB Ges.m.b.H
Vienna-Liesing
Tel: +43 1 888 25 11
Fax: +43 1 888 25 11 85

BELGIUM

S.A. ESAB N.V.
Heist-op-den-Berg
Tel: +32 15 25 79 30
Fax: +32 15 25 79 44

BULGARIA

ESAB Kft Representative Office
Sofia
Tel: +359 2 974 42 88
Fax: +359 2 974 42 88

THE CZECH REPUBLIC

ESAB VAMBERK s.r.o.
Vamberk
Tel: +420 2 819 40 885
Fax: +420 2 819 40 120

DENMARK

Aktieselskabet ESAB
Herlev
Tel: +45 36 30 01 11
Fax: +45 36 30 40 03

FINLAND

ESAB Oy
Helsinki
Tel: +358 9 547 761
Fax: +358 9 547 77 71

GREAT BRITAIN

ESAB Group (UK) Ltd
Waltham Cross
Tel: +44 1992 76 85 15
Fax: +44 1992 71 58 03

ESAB Automation Ltd
Andover

Tel: +44 1264 33 22 33
Fax: +44 1264 33 20 74

FRANCE

ESAB France S.A.
Cergy Pontoise
Tel: +33 1 30 75 55 00
Fax: +33 1 30 75 55 24

GERMANY

ESAB Welding & Cutting GmbH
Langenfeld
Tel: +49 2173 3945-0
Fax: +49 2173 3945-218

HUNGARY

ESAB Kft
Budapest
Tel: +36 1 20 44 182
Fax: +36 1 20 44 186

ITALY

ESAB Saldatura S.p.A.
Bareggio (Mi)
Tel: +39 02 97 96 8.1
Fax: +39 02 97 96 87 01

THE NETHERLANDS

ESAB Nederland B.V.
Amersfoort
Tel: +31 33 422 35 55
Fax: +31 33 422 35 44

NORWAY

AS ESAB
Larvik
Tel: +47 33 12 10 00
Fax: +47 33 11 52 03

POLAND

ESAB Sp.zo.o.
Katowice
Tel: +48 32 351 11 00
Fax: +48 32 351 11 20

PORTUGAL

ESAB Lda
Lisbon
Tel: +351 8 310 960
Fax: +351 1 859 1277

ROMANIA

ESAB Romania Trading SRL
Bucharest
Tel: +40 316 900 600
Fax: +40 316 900 601

RUSSIA

LLC ESAB
Moscow
Tel: +7 (495) 663 20 08
Fax: +7 (495) 663 20 09

SLOVAKIA

ESAB Slovakia s.r.o.
Bratislava
Tel: +421 7 44 88 24 26
Fax: +421 7 44 88 87 41

SPAIN

ESAB Ibérica S.A.
San Fernando de Henares
(MADRID)
Tel: +34 91 878 3600
Fax: +34 91 802 3461

SWEDEN

ESAB Sverige AB
Gothenburg
Tel: +46 31 50 95 00
Fax: +46 31 50 92 22

ESAB International AB

Gothenburg
Tel: +46 31 50 90 00
Fax: +46 31 50 93 60

SWITZERLAND

ESAB Europe GmbH
Baar
Tel: +41 1 741 25 25
Fax: +41 1 740 30 55

UKRAINE

ESAB Ukraine LLC
Kiev
Tel: +38 (044) 501 23 24
Fax: +38 (044) 575 21 88

North and South America

ARGENTINA

CONARCO
Buenos Aires
Tel: +54 11 4 753 4039
Fax: +54 11 4 753 6313

BRAZIL

ESAB S.A.
Contagem-MG
Tel: +55 31 2191 4333
Fax: +55 31 2191 4440

CANADA

ESAB Group Canada Inc.
Mississauga, Ontario
Tel: +1 905 670 0220
Fax: +1 905 670 4879

MEXICO

ESAB Mexico S.A.
Monterrey
Tel: +52 8 350 5959
Fax: +52 8 350 7554

USA

ESAB Welding & Cutting
Products
Florence, SC
Tel: +1 843 669 4411
Fax: +1 843 664 5748

Asia/Pacific

AUSTRALIA

ESAB South Pacific
Archerfield BC QLD 4108
Tel: +61 1300 372 228
Fax: +61 7 3711 2328

CHINA

Shanghai ESAB A/P
Shanghai
Tel: +86 21 2326 3000
Fax: +86 21 6566 6622

INDIA

ESAB India Ltd
Calcutta
Tel: +91 33 478 45 17
Fax: +91 33 468 18 80

INDONESIA

P.T. ESABindo Pratama
Jakarta
Tel: +62 21 460 0188
Fax: +62 21 461 2929

JAPAN

ESAB Japan
Tokyo
Tel: +81 45 670 7073
Fax: +81 45 670 7001

MALAYSIA

ESAB (Malaysia) Snd Bhd
USJ
Tel: +603 8023 7835
Fax: +603 8023 0225

SINGAPORE

ESAB Asia/Pacific Pte Ltd
Singapore
Tel: +65 6861 43 22
Fax: +65 6861 31 95

SOUTH KOREA

ESAB SeAH Corporation
Kyungnam
Tel: +82 55 269 8170
Fax: +82 55 289 8864

UNITED ARAB EMIRATES

ESAB Middle East FZE
Dubai
Tel: +971 4 887 21 11
Fax: +971 4 887 22 63

Africa

EGYPT

ESAB Egypt
Dokki-Cairo
Tel: +20 2 390 96 69
Fax: +20 2 393 32 13

SOUTH AFRICA

ESAB Africa Welding & Cutting
Ltd
Durbanville 7570 - Cape Town
Tel: +27 (0)21 975 8924

Distributors

For addresses and phone numbers to our distributors in other countries, please visit our home page

www.esab.com



www.esab.com

