

YOUR NEAREST TRADESMART MEMBER IS:



See back page for store locations

WWW.TRADESMART.NET.AU

1 APRIL - 30 JUNE 2024



TAX TIME MADNESS

P/N: BMEA-H35

ONE PERSON EARTH AUGER

- 1 Person Earth Auger powered by Honda GX35
- Includes 3 Auger drills, 100mm, 150mm & 200mm
- Heavy Duty Gear box
- Honda GX 3 year warranty, Bullmax 1 year warranty

\$1395

GREAT BUY!



P/N: 382061

A60TZ 125MM X 1MM CUT OFF DISCS X 100 BUCKET

- Free of iron, sulfur and chlorine
- Short cutting times
- Minimal burr formation
- Low thermal load

\$209⁰⁰

GREAT BUY!



**BONUS
KLINGPODS**

P/N: BKK-11W

11 PIECE PROFESSIONAL KNIFE SET

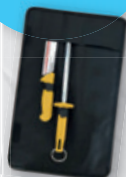
- Blade made from quality stainless steel.
- Double sided sharpening stone and honing steel
- Secure EVA case with carry handle
- NSF certification

Starrett



NSF

**BONUS
2 PIECE CHEF'S
KNIFE SET**



\$149⁰⁰

GREAT BUY!

P/N: SSR002

SAFETY STEP

\$69⁰⁰

GREAT BUY!

- 250kg safe working load
- Lightweight 3.5kg design
- Indented steps on all four sides
- Grip Tape for stability
- Complies with EN14183 Section 6



RICHMOND
ROLLING SOLUTIONS

**SUPPORT LOCAL
SHOP LOCAL**



WELDING ACCESSORIES

PATRIOT TRADE WELDING HELMET



- Wide viewing area 100 x 53mm
- Shade Adjustable from 5-8/9-13
- Grinding mode
- Quad Sensors

\$109.00
EA
P/N: 700143

BOSSWELD

BT / TECMEN PAPR FREFLOW

BT **TECMEN**



- Large viewing area: 107 x 75mm
- 1 / 1 / 1 / 1 Highest Optical Class
- Dual Shade Range 5-8 / 9-13
- See True Colours with "RealLens™ Technology"
- Four Independent Sensors

Comes with a PAPR blower unit, rechargeable Li-Ion battery, carry bag & shoulder strap

\$1649.00
EA
P/N: 703090



CLASS LEADING P3 FILTER

HIGH FILTER EFFICIENCY > 99.97%



BT-11 GASLESS MIG WIRE

- A5.20 E71T-11
- Smooth Arc action DC-
- No shielding gas required
- Suitable for single and multiple pass applications

\$79.00
EA
GREAT VALUE



CODE BT-11 MIG Wire
200360 Gasless 0.8mm x 5kg
200361 Gasless 0.9mm x 5kg

BT

INTECH

MADE FOR THE TRADE

SUPERMIG WELDING GLOVES
\$12.95
GSMIG-XL

- Manufactured from premium cowhide leather
- Cotton fabric lining
- Stitched with Kevlar® thread
- Reinforced palm, thumb and knuckle guard with welded seams
- 680mm long



LEATHER WELDING JACKET
\$79.00
WJFL

- Available in any size: M, L, XL, 2XL, 3XL
- Premium cowhide leather
- Press studs for front closure
- Adjustable cuffs
- Internal pocket
- Side adjusters with press studs
- Wear areas reinforced with rivets
- 730mm long
- Harness compatible flap on the back
- Stitched with Kevlar® thread



WELDING BLANKET 1.8 X 1.8 M
\$85.00
WB18



- Made from heavy duty cow split leather
- Stitched with Kevlar® thread to increase resistance to heat, cuts & abrasion
- Included eyelets on outer edges for securing

CABLE COVER (TORCH COVER)
\$65.00
CAB-TC4



- Used to protect against hot metal burns, sparks, spatter and, hence, extending the life of torch cables
- Heavy duty cowhide leather
- Easily cuts to required length
- Suit all types of cables and hoses
- Stitched with Kevlar® thread

FULL LEATHER WELDING HOOD
\$29.95
HOOD-FL

- Made from premium cow split leather
- Side gussets for a comfortable fit
- Hook & loop opening
- Stitched with Kevlar® thread
- Edges are fully bound



MIG SPARE PARTS KIT FOR BINZEL STYLE TORCHES

Weldclass

- Common consumable parts
- Robust & compact carry/storage case that easily fits in any toolbox
- Hanging hook, to allow box to be easily displayed on pegboard or slatwall
- Images and part numbers for easy re-ordering



PROMAX MG12

Weldclass

MINI MAGNETS

- 90°, 45°, or 60/30° angles
- Low profile, height 60mm
- Ideal for holding work pieces at multiple points
- Max pull force of approx 12kg*
- Aluminum clad enclosure for easy cleaning



Part No.	Description	Price
WC-01875	2-Pack	\$29.95
WC-01876	6-Pack	\$79.95

PROMAX MG20 SERIES

Weldclass

ON/OFF MAGNETS

- Heavy-duty magnets with on-off switch for easy and safe positioning and removal
- Turn magnet Off or at the mid-point when setting up, turn On when in final position
- Ideal for flat, round and square steel profiles
- Easy to clean, simply turn off and wipe



Part No.	Description	Price
WC-01885	MG22 90/45°	\$84.95
WC-01886	MG26 90°, 45° & 60/30°	\$169.00

All prices include GST. All specifications and prices are subject to change at any time without notice. E.&O.E.



PUREGAS

- Own your gas bottle
- No waiting - exchange on the spot
- Pay for the gas only
- No rental or lease fees
- No contracts or admin fees
- No hidden or low use charges

ARGON | ARGON MIX | OXYGEN | ACETYLENE | CARBON DIOXIDE | NITROGEN

WELDING & ACCESSORIES

ULTRA 220MP

MACHINE BUNDLE

Weldclass

INCLUDES

- Ultra 220MP Dual Pulse MIG
- Promax 650 Helmet
- 2KG Aluminium MIG Wire
- MIG Parts Kit
- Welding Gloves
- FREE Stubble Holder



Free!

Part No.	Description	Price
WC-220MPC01	220MP Combo	\$4,999.00

FORCE 201T

ULTIMATE KIT

Weldclass

INCLUDES

- Force 201T AC/DC TIG Welder
- Promax 650 Helmet
- Platinum TG-21 TIG Gloves
- TIG Parts Kit Standard
- Platinum PX Glass Cup TIG Parts Kit Standard
- Foot Controller
- Platinum TK17 Super-Flex 4m TIG Torch



Free!

Part No.	Description	Price
WC-201TC01	201T Combo	\$2,189.00

ULTRA 250MST

MIG/STICK/TIG WELDER

Weldclass

- Made in Europe
- 250A output Max MIG capacity 12mm steel
- Easy-to-use Interactive LCD controls
- 15A plug
- ATC technology for outstanding arc control on thin materials
- Takes 5kg or 15kg spools
- Synergic/Auto or Manual MIG
- Programs for Steel, FC, SS, Alu, Bronze
- Generator friendly (min 13kva)



Part No.	Description	Price
WC-250MST	Ultra 250MST	\$1,999.00

All prices include GST. All specifications and prices are subject to change at any time without notice. E.&O.E.

MST188X

- 180A output, 10A plug
- MIG / Stick / TIG welder
- Digital LED display
- DC TIG lift arc start
- Excellent arc stability
- Gas /gasless operation
- 2T / 4T trigger latching
- Stepless amperage control
- Generator safe
- Suits D100/D200 spools
- Spool gun ready

BUNDLE CONTAINS

- Bossweld Welder Trolley Universal
- Gasless GS MIG Wire 0.8mm 4.5kg
- Mild Steel MIG Wire 0.8mm 5kg
- Wide View Electronic Welding Helmet (Helmet Style May Vary)
- 16" Black & Gold Welding Gloves



\$1049.00
EA
P/N: 699188BUNDLE

BOSSWELD Xseries

MST250XT

\$1899.00
EA
P/N: 699625BONUS

SYNERGIC

- Single phase 240V
- 250 Amp output
- MIG / Stick / TIG welder
- Suitable for industrial
- Digital LED display
- 4 Roll wire drive system
- Stepless adjustment control
- Gas /gasless operation
- 2T / 4T trigger latching
- Excellent arc stability
- Gun / lead hanger
- Suits 5kg & 15kg spools
- Spool gun ready

BONUS ITEMS

- XR4 Welding Helmet
- 70S-6 MIG Wire 0.9mm 15kg



BT/TECMEN FLIP FRONT WELDING HELMET

\$429.00
EA
P/N: 703110

BT
TECMEN

- Panoramic View
- See True Colours with "RealLens™ Technology"
- Large viewing area: 107 x 75mm
- 1 / 1 / 1 / 1 Highest Optical Class
- Dual Shade Range 5-8 / 9-13
- Four Independent Sensors



Purchase Powercraft 200M or Powercraft 206 AC/DC TIG below and receive a BONUS via Redemption



\$1,989.00
MULTI WELDER



\$1,699.00
AC/DC TIG

Powercraft® 200M 4-in-1 Multi-welder. 200-amp 240V input / 10amp multi-purpose 4 in 1 welder with EYZET™ technology & easy to use LCD Screen – the only welder you will ever need.
Part Number: K69074-1

Powercraft® 206 AC/DC TIG Welder. 200Amp output / 10amp input ACDC TIG Welder capable of HF and Lift TIG AC/DC, TIG pulse AC/DC, TIG Spot, Stick Welding.
Part Number: K69079-1

www.powercraft-lincolnelectric.com.au • The Welding, Cutting, Automation and Filler Metal Experts

BONUS

VIA REDEMPTION
Use QR Code to redeem
Pack valued at \$295.00
Includes:



LINCOLN
ELECTRIC

\$899.00
GREAT VALUE!



Powercraft® 191C 3-in-1 MIG Welder with BONUS Helmet & Accessories Box. The 191C (190Amp/10amp) is 3-in-1 MIG/STICK/DC TIG Welder using a 10 amp power supply. Upon redemption the package comes with BONUS Powercraft Electronic welding helmet, gloves and accessories (valued at \$295.00). Part Number: K69072-1E

\$389.00
EACH
SAFETY FIRST



Viking® 3350 Series 4 Helmets with 4C Lens
4C Technology – perfect 1/1/1 optical clarity. External grind button. Innovative X6 Headgear™ improves comfort. Continuously variable 5-13 shade with internal control. Large 95 x 85 mm view size. 4 arc sensors. Solar cells with a replaceable lithium battery.
Part Numbers: K3034-4 Black, K3101-4 Mojo.

\$69.95
EACH
VISIBILITY



Red Line™ Welding Jacket FR Bright Safety Orange with Reflective Stripes. High Visibility Flame Retardant Orange welding jacket with reflective safety stripes provides prominent operator visibility which is ideal for job sites with moving vehicles or machinery. Back slot for use with height safety harness.
Part Numbers: K4692-L, K4692-XL, K4692-2XL

www.powercraft-lincolnelectric.com.au • The Welding, Cutting, Automation and Filler Metal Experts

LINCOLN
ELECTRIC

FREIGHT CHARGES MAY APPLY



HAND TOOLS

sutton

Superior Since 1917



- Ball End & Hex End L-Wrench Sets
- Ball End saves time by quickly funneling tool into screw
- 25° angle allows natural hand and wrist movement
- Superior Ball End strength and working angle



Size	Item #	Price Inc. GST
9pc ColorGuard™ Set – Metric	BD69499	\$51.00
13pc ColorGuard™ Set – Imperial	BD69637	\$69.00
22pc ColorGuard™ Set – Metric & Imperial	BD69600	\$115.00
22pc Set – Metric & Imperial	BD20199	\$93.00

FAMOUS
TOLEDOGasket Scraper
Set 3pc 280mm

301278

- Removes old gaskets, silicone sealants, gasket residue, carbon, ingrained dirt, etc.
- Blade widths: 20, 25, 40mm

**\$29⁰⁰**

GREAT VALUE!

Carbide Scraper
Set 2pc 210mm

301699

- Scrape and remove gasket, sealant and sticky or thick adhesive applications

**\$79⁰⁰**

GREAT VALUE!

Scraper & Hook Set 5pc

301008

- Suitable for automotive, industrial and hardware applications
- Scraping, scribing, marking, picking and seal removal

**\$50⁰⁰**

GREAT VALUE!

Stainless Steel
Scraper Set 3pc

301651

- General purpose 30 & 50mm chisel and 30mm bent scraper
- Length: 220mm

**\$59⁹⁵**

GREAT VALUE!

PROFESSIONAL TOOLS
HITRatchet Pipe
Cutter

HITVPC42

- Ratchet shear easily cuts PVC & other plastic pipe Ø42mm
- Includes cutting guide

**\$75⁰⁰**

GREAT VALUE!

Steel Strap Cutter

Sliding Handle 600mm

HITSS600SL

- Drop forged heat treated alloy steel blades
- Capacity: 51 x 1.3mm or 32 x 1.2mm double

**\$249⁰⁰**

GREAT VALUE!

Sliding
Strike
HandleConcrete Mesh
Cutter 800mm

HITRCA800

- Specially designed for cutting extra hard steel concrete mesh
- Small cutting head provides easy access into restricted spaces

**\$256⁰⁰**

GREAT VALUE!

Wire Rope Cutter

710mm

HITW16

- Cuts soft and hard cable, wire rope, ACSR cable
- Extra-long handles provide enough leverage to cut through wire rope up to Ø16mm

**\$159⁰⁰**

GREAT VALUE!

KINCROME

Iron Pipe Wrench

350mm [14"] PN: K040122
450mm [18"] PN: K040123
600mm [24"] PN: K040124

**\$39.⁹⁵**

350MM (14")

\$59.⁰⁰

450MM (18")

\$89.⁰⁰

600MM (24")

- > Heavy-duty cast iron construction for durability & longevity
- > Floating hook jaw design allows ratcheting function
- > Overbite jaw for larger gripping surface
- > Hardened jaws for extended tooth & grip durability

Aluminium Pipe Wrench

350mm [14"] PN: K040132
450mm [18"] PN: K040133
600mm [24"] PN: K040134

**\$59.⁰⁰**

350MM (14")

\$79.⁰⁰

450MM (18")

\$119.⁰⁰

600MM (24")

- > Heavy-duty & lightweight cast aluminium construction for durability and portability
- > Floating hook jaw design allows ratcheting function
- > Overbite jaw for larger gripping surface
- > Hardened jaws for extended tooth & grip durability

\$69.⁰⁰

GREAT DEAL!

3PC 275mm
Long Reach
Plier Set

PN: K4254



- > Designed to easily access confined areas
- > Long handles for higher leverage, control & grip
- > Machined jaws for a secure grip in all conditions
- > Flush rivets for strength with a narrow profile

\$79.⁰⁰

GREAT DEAL!

2PC 325mm
Extra-long
Reach Plier Set

PN: K4258



- > Double pivot allows for one handed use
- > Wider jaw opening with less handle motion
- > Extra-long for ultimate access in confined areas
- > Flush rivets for strength & a narrow profile

Now BK Series Tool Boxes
A Serious Truck Toolbox
Made TOUGH for Australian Conditions



1-11 TOUGH

Now BK Series Tool Boxes
A Serious Truck Toolbox
Made TOUGH for Australian Conditions



1-11 TOUGH

Now BK Series Tool Boxes
A Serious Truck Toolbox
Made TOUGH for Australian Conditions



1-11 TOUGH

HAND TOOLS

DUAL ACTION
Multi-Purpose Sockets

\$159.00
BONUS DEAL

SURETORQ®
27 PCE RATCHETING WRENCH & BIT SET

Part No: 10043102

31 PCE METRIC SET

- 14 Pce Metric Standard: 4mm-15mm
- 14 Pce Metric Deep: 4mm-15mm
- 72 Tooth Ratchet Handle
- 50mm & 150mm Extension Bar
- Blow-Mold Case

6 1/4"

IMPACT-HAND TOOL RATED

\$229.00
BONUS DEAL

SURETORQ®
24 PCE AUTOMOTIVE KIT

Part No: 10045302

53 PCE METRIC & IMPERIAL SET

- 10 Pce Imperial Standard: 3/16"-9/16"
- 10 Pce Imperial Deep: 3/16"-9/16"
- 14 Pce Metric Standard: 4mm-15mm
- 14 Pce Metric Deep: 4mm-15mm
- 72 Tooth Ratchet Handle
- 50mm, 100mm & 150mm Extension Bar
- 150mm Wobble Spinner Handle
- Blow-Mold Case

6 1/4"

THIN WALLED
Engineered for precision in tight spaces

\$199.00
BONUS DEAL

5 PCE ADAPTER SET

Part No: 10143501

35 PCE METRIC SET

- 16 Pce Metric Standard: 7mm-22mm
- 16 Pce Metric Deep: 7mm-22mm
- 72 Tooth Ratchet Handle
- 75mm & 150mm Wobble Extension Bar
- Blow-Mold Case

6 3/8"

MULTI-PURPOSE SOCKETS
Designed for both impact & hand tool use

\$369.00
BONUS DEAL

5 PCE ADAPTER SET

Part No: 14244001

40 PCE METRIC & IMPERIAL SET

- 18 Pce Metric: 10mm-32mm
- 15 Pce Imperial: 3/8"-1-1/4"
- 24 Tooth Ratchet Handle
- 1/2" Dr Universal Joint
- Blow-Mold Case
- 250mm & 125mm Wobble Extension Bar
- 14mm, 16mm & 21mm Magnetic Spark Plug Socket

12 1/2"

KINCROME

\$99.00
GREAT VALUE!

Combination Spanner Set 12 Piece – Metric
PN: K3181

- > 8-19mm, Ring and jaw offset at 15°
- > Manufactured from hardened & tempered Chrome Vanadium Steel
- > Spanners with thick walls & long handles for increased leverage
- > Thinner head for hard to reach fasteners

\$119.00
GREAT VALUE!

Combination Spanner Set 10 Piece – Imperial
PN: K3046

- > Sizes: 1/4, 5/16, 3/8, 7/16, 1/2, 9/16, 5/8, 11/16, 3/4, 15/16"
- > Ring and jaw offset at 15°
- > Manufactured from hardened & tempered Chrome Vanadium Steel
- > Thinner head for hard to reach fasteners

\$299.00
GREAT VALUE!

Combination Spanner Set 25 Piece – Metric
PN: K3047

- > Sizes: 6-28, 30, 32
- > Ring and jaw offset at 15°
- > Manufactured from hardened & tempered Chrome Vanadium Steel
- > Spanners with thick walls & long handles for increased leverage

MVRK PIRANHA

MULTI FUNCTION INDUSTRIAL SNIPS

Industry leading premium quality stainless steel micro serrated blades. Precision ground and honed.

Optimised geometry to cut paper and card, kevlar, carbon and glass cloth, fabric, leather, carpet, linoleum, wire, cable, thin sheet metals, rubber, strapping, sarking, lightweight mesh, plastic sheet, flashing and other tough materials.

Ambidextrous with dual sided, quick release thumb lock.

Durable soft grip chemical resistant handles.

THESE SNIPS DO IT ALL!

1003-MF200	200mm Stainless Steel Snips
1003-MF200HT	200mm High Tensile Stainless Steel Snips
1003-MF230	230mm Stainless Steel Snips

\$24⁹⁵
1003-MF200

\$38⁹⁵
1003-MF200HT

\$34⁹⁵
1003-MF230

sutton

LOCK JAW

Self-Adjusting Locking Pliers make jobs faster and easier.



\$68.00
INC GST
P/N: L2190225

225mm Welding Clamp

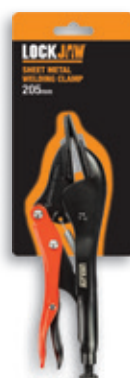
- Self-Adjusting mechanism for one-handed operation.
- 41mm Jaw Opening



\$50.00
INC GST
P/N: L2200275

275mm Table C-Clamp

- Self-Adjusting mechanism for one-handed operation.
- 90mm Jaw Opening



\$33.00
INC GST
P/N: L2210205

205mm Sheet Metal Welding Clamp

- Spreads the clamping pressure to avoid damage on soft materials
- *Not self-adjusting automatic



\$40.00
INC GST
P/N: L2210250

250mm Sheet Metal Welding Clamp

- Spreads the clamping pressure to avoid damage on soft materials
- *Not self-adjusting automatic

Superior Since 1917

A family business built upon

TRUST, INNOVATION
QUALITY & RELIABILITY

BREMICK™

HAND TOOLS & MEASURING

SHOP SMART - BUY SMART

NYLON HAMMER WITH PLASTIC HANDLE

- Worn faces can be quickly replaced BY HAND providing minimum down time.
- All faces are one-piece mouldings.
- There are no metal pegs which can damage the workplace when worn.
- Serrations in the metal head prevent faces loosening in use
- Faces have a shoulder for extra strength and to prevent fracture from misdirected blows.

Tasks: UPVC, Window Manufacture & Installation, Brewery Furniture, Shop fitting & Partitioning

Trades/Industries: Construction, Crafts or DIY.

Also Available:

TH710 - 445g 32mm Face (1lb) \$51.00
 TH712 - 650g 38mm Face (1-1/2lb) \$65.00
 TH714 - 850g 44mm Face (2lb) \$65.00
 TH716 - 1230g 50mm Face (2-3/4lb) \$86.00



FROM

\$51⁰⁰

GREAT VALUE!

COPPER HAMMER WITH WOODEN HANDLE

- Cast-Iron head of extra heavy construction fitted with two electrolytic copper faces and wood handle.
- Ideal for Heavy-duty hammering where SAFE blows of maximum weight are required.



THOR
SOFT FACED HAMMERS

Also Available:

TH310 - 830g #1- 32mm Face (2lb) \$104.00
 TH312 - 1260g #2- 38mm Face (2-3/4lb) \$149.00
 TH314 - 1940g #3 - 44mm Face (4lb) \$173.00
 TH316 - 2830g #4 - 50mm Face (6-1/4lb) \$273.00



FROM

\$104⁰⁰

GREAT VALUE!

Tasks: Automotive Assembly & Repair

Trades/Industries: Construction, Metal work, Crafts, Agriculture/forestry, Maintenance/Repair/Overhaul.

Made Tough Since 1936

MUMME  TOOLS

mummetools.com.au



MUMME TOOLS
Crowbars
Hexagon

- > Used for digging holes, breaking up rocks and concrete
- > Accurately ground and sharpened point end is ideal for breaking up rock

1800 x 25mm	SKU: 5CB180025	\$79.00
1800 x 30mm	SKU: 5CB180030	\$109.00

PRICED FROM
\$79⁰⁰

MUMME TOOLS
Fencing Bars

- > Used for digging holes, breaking up clay and cutting through tree roots
- > Finely ground and sharpened chisel end

1800 x 30mm - Hexagon	SKU: 5FB180030	\$99.00
1800 x 27mm - Round	SKU: 5FB180025	\$110.00

PRICED FROM
\$99⁰⁰

Made Tough Since 1936

MUMME  TOOLS

mummetools.com.au



\$79⁰⁰
GREAT VALUE!

MUMME TOOLS
Punch & Chisel Set
6 Piece

- > Set Components:
4, 6mm Long Pin Punch
6.5mm Heavy Duty Centre Punch
8mm Starter Drift
12, 19mm Alloy Cold Chisel

SKU: 4PCSET6



PRICED FROM
\$37⁹⁵

MUMME TOOLS
Sledge Hammers

- > A well balanced versatile sledge hammer for building, construction, mining & demolition work

1.8kg (4lb)	SKU: 9HS5GFH1.8	\$37.95
3.15kg (7lb)	SKU: 9HS5GFH3.5	\$69.00
4.5kg (10lb)	SKU: 9HS5GFH4.5	\$84.00
6.3kg (14lb)	SKU: 9HS5GFH6.3	\$94.00



STEEL HEAD
FIBRE GLASS HANDLE

\$167⁰⁰
HOT BUY!

MUMME TOOLS
Wire Rope Punches

- > Softened striking face combined with a urethane ring reduces the likelihood of chipping from missed hits

Size: 13mm	SKU: 7WRP13
Size: 16mm	SKU: 7WRP16
Size: 19mm	SKU: 7WRP19
Size: 22mm	SKU: 7WRP22



STEEL HEAD
FIBRE GLASS HANDLE

ACCUD

Professional
Measuring Instruments

FRACTIONAL IMPERIAL IP54 CALIPER

Resolution: 0.01 mm / 0.0005" / 1/128"
Accuracy: ± 0.03 mm

• Display Modes: Fraction Imperial, Decimal Imperial & Metric

P/N: AC-113-006-11 P/N: AC-113-008-11 P/N: AC-113-012-11

\$139
0-150 MM

\$179
0-200 MM

\$286
0-300 MM

Includes
CALIBRATION
CERTIFICATE

DIGITAL DEPTH CALIPER

Includes
CALIBRATION
CERTIFICATE

Resolution: 0.01 mm / 0.0005"
Accuracy: ± 0.03 mm

P/N: AC-171-008-11

P/N: AC-171-012-11

P/N: AC-171-020-11

\$187
0-200 MM

\$414
0-300 MM

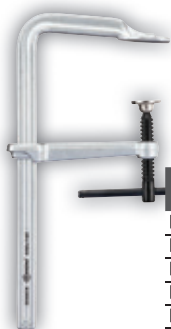
\$717
0-500 MM



HOTTEST DEALS!

HAND TOOLS & TOOL KITS

Ehoma
Clamping Solutions By ITM®

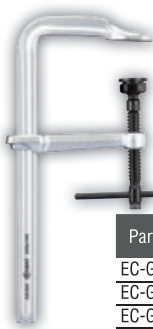


FORGED STEEL F CLAMPS

- Premium quality forged steel clamps
- Tempered & hot forged steel
- Nickel & chrome plating

Part No.	Span x Depth	Clamping Force	Price
EC-G16CS	160x80mm	300kg	\$44.00
EC-G20CS	200x100mm	450kg	\$56.00
EC-G25CS	250x120mm	550kg	\$69.00
EC-G30CS	300x140mm	670kg	\$89.00
EC-G40CS	400x175mm	1000kg	\$115.00

Ehoma
Clamping Solutions By ITM®



HEAVY-DUTY FORGED STEEL F CLAMPS

- Larger rail sizes 30x15mm
- For heavy duty applications
- Changeable clamping heads
- Socket drive handle

Part No.	Span x Depth	Clamping Force	Price
EC-GS30C	300x140mm	1200kg	\$155.00
EC-GS40C	400x120mm	1200kg	\$169.00
EC-GS60C	600x120mm	1200kg	\$195.00

Ehoma
Clamping Solutions By ITM®



QUICK ACTION FORGED STEEL F CLAMPS

- Ratchet type lever prevents overloading & resists vibration
- For high pressure, fast action clamping purposes

Part No.	Span x Depth	Clamping Force	Price
EC-G20L	200x100mm	350kg	\$99.00
EC-G30L	300x140mm	500kg	\$145.00
EC-G40L	400x120mm	550kg	\$155.00

KINCROME

\$2299.00

GREAT BUY!

238 Piece Contour 29" 5d Chest – Blue

PN: K1941



- > 100 Piece LOK-ON™ Sockets & Accessories EVA Tray
- > 30 Piece Combination Spanners EVA Tray
- > 8 Piece TorqueMaster® Screwdriver Set
- > 33 Piece General Bit & Holder Set and more

\$3999.00

GREAT BUY!

278 Piece Contour 29" 11d – Blue

PN: K1950



- > 100 Piece LOK-ON™ Sockets & Accessories EVA Tray
- > 30 Piece Combination Spanners EVA Tray
- > 115 Piece TorqueMaster® Screwdrivers & Fastening EVA Tray
- > 11 Piece Pliers & Wrenches EVA Tray and more

\$6999.00

GREAT BUY!

545 Piece Contour 42" 17d – Blue

PN: K1958



- > 165 Piece LOK-ON™ Sockets & Accessories EVA Tray
- > 30 Piece Combination Spanners EVA Tray
- > 187 Piece TorqueMaster® Screwdrivers & Fastening EVA Tray
- > 98 Piece Hex & TORX® Fastening EVA Tray and more

KINCROME

\$949.00

GREAT DEAL!

147 Piece Cantilever Tool Kit

PN: K1618



- > 69 Piece Sockets & Accessories EVA Tray
- > 28 Piece Sockets & Accessories EVA Tray
- > 11 Piece Combination Spanners EVA Tray
- > 4 Piece Pliers EVA Tray and more

\$1159.00

GREAT DEAL!

164 Piece Cantilever Tool Kit

PN: K1620



- > 69 Piece Sockets & Accessories EVA Tray
- > 28 Piece Sockets & Accessories EVA Tray
- > 11 Piece Metric Combination Spanners EVA Tray
- > 11 Piece Imperial Combination Spanners EVA Tray and more

\$549.00

GREAT DEAL!

Portable Workshop Tool Kit 150 Piece

PN: K1875

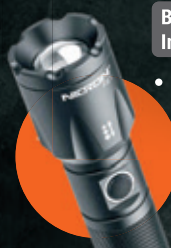


- > 10 1/4" Drive Metric Sockets: 4 – 13mm
- > 18 1/2" Drive Metric Sockets: 8 – 32mm
- > 10 1/4" Drive Imperial Sockets: 5/32 – 1/2"
- > 16 1/2" Drive Imperial Sockets: 3/8 – 1.1/4" and more

NICRON
LED TORCHES & HEADLAMPS

Focusable Flashlight

P/N: F81



Brightness: 1000 Lm
Intensity: 6500 Cd

- USB-Micro B Charge Port

\$110

RECHARGEABLE!

Twin-Beam Headlamp

P/N: H35

Brightness: 1600 Lm
Intensity: 4000 Cd

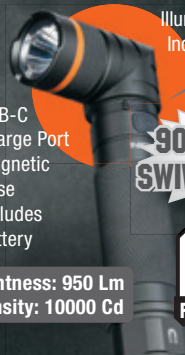
\$115

RECHARGEABLE!

- USB-C Charge Port
- Includes high capacity li-ion battery
- Adjust headlamp up to 120°
- Splash Proof IP65
- Anti-slip head straps ideal for helmets

PRO TWIST Light

P/N: B71pro



Illuminated Battery Indicator Switch

90 DEGREE SWIVEL HEAD!

Brightness: 950 Lm
Intensity: 10000 Cd

\$94

RECHARGEABLE!

Long Range Tactical Flashlight

P/N: B200

Brightness: 1000 Lm
Intensity: 72000 Cd

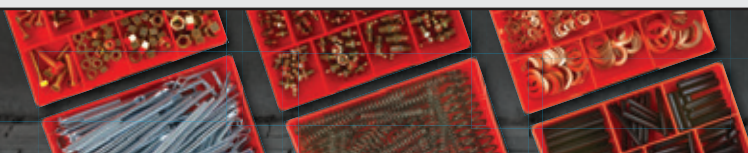
- IP65 2M Water Proof
- USB-Micro B Charge Port



\$140

RECHARGEABLE!

Champion
FASTENERS



ASSORTMENT KITS
HOLDING AUSTRALIA TOGETHER SINCE 1968

SAFETY

EYE PROTECTION

MACK

MACK FENDER SAFETY GLASSES

- Also available with clip-on foam gasket.
- Colours: Clear, Smoke, Amber, Blue Mirror

NEW
**AVAILABLE
IN 2 SIZES**


CODE	DESCRIPTION	SIZES	PRICE
MKFENDER	Fender	Small, Standard	\$5.95
MKFENDERG	Fender with Foam Gasket	Small, Standard	\$9.95

MACK B-DOUBLE SAFETY GLASSES

Code: MKBDOUBLES0000

- Polarised outdoor smoke lens
- UV resistant


\$44.95
GREAT VALUE

MACK MONTEREY SAFETY GLASSES

Code: MKMNTREYPZ0000 - Polarised Green
MKMNTREYPC0000 - Photochromatic Grey

- Ultra lightweight
- Anti-scratch lens
- Moulded nose bridge


\$44.95
GREAT VALUE

SAFETY PPE

NINJA
Contego
TOUGH GLOVES

FRONTIER
SAFETY

NINJA ICE HPT COLD RESISTANT GLOVE

Code: NIICEFRZRBK

- Liquid resistant, keeping hands comfortable and flexible in cold applications


**SIZES
S-2XL**
\$8.00
SPECIAL PRICE

CONTEGO JABIRU 360° C5 IMPACT GLOVE

Code: COJABMECH

- High protection all-round glove with strong impact and anti-vibration features
- Reflective material for high visibility


**SIZES
M-2XL**
\$49.95
SPECIAL PRICE

FRONTIER BROAD BRIM HARD HAT WITH RATCHET HARNESS

- Premium 6 point comfort harness
- Rear ratchet wheel for single hand fit adjustment



CODE	DESCRIPTION	PRICE
FRTGBB56RWW0000	Non-Vented	\$22.95
FRTGBB57RWW0000	Vented	\$24.95

maxisafe
there's safe and there's Maxisafe.

CODE: HRE664

Maxisafe Folding Earmuff 33dB Class 5 - Green

- Class 5 protection with SLC₈₀ rating of 33dB
- Comfortable TPU earmuff cushions
- Folding style earmuff for compact storage
- Height adjustable headband

\$29.95
EACH
GREAT VALUE!

CLASS 5
SLC₈₀ 33dB

Maxisafe Neck Style Earmuff 30dB Class 5 - Yellow


CODE: HRE663

CLASS 5
SLC₈₀ 30dB

- Class 5 protection with SLC₈₀ rating of 30dB
- Comfortable TPU earmuff cushions
- Wear with a helmet or hat

\$26.95
EACH
GREAT VALUE!

Helmet Mounted Earmuffs 26dB - Class 5


CLASS 5
SLC₈₀ 26dB

CODE: HHE672

- Class 5 protection with SLC₈₀ rating of 26dB
- Easily mounted and adjusted
- Supplied with 25mm & 30mm accessory clips

\$39.95
EACH
HOT BUY!

For order enquiries please contact us on 1300 062 947 or sales@maxisafe.com.au

maxisafe.com.au
maxisafe
there's safe and there's Maxisafe.

\$14.95
BOX
GREAT VALUE!

CODE: GNB205

Black Ace Disposable Nitrile Gloves Unpowdered

- Certified for protection against Fentanyl
- Low sweat technology
- Made from 100% nitrile
- Powder free and latex free
- Sizes S-XL - Box of 100
- Size 2XL - Box of 90



Stimela 'Foreman' Black Gumboot with Safety Toe

- Top quality PVC/nitrile blend sole
- Steel Toe for added safety
- Resistant to oils, grease, acids and fats
- Sizes 4-14

CODE: FWG902
\$54.95
PAIR
HOT BUY!


Ready 2 Work Kit

CleanAIR Omnira Face Shield & Basic PAPR Kit

- An advanced built-in air distribution system with the highest standard in respiratory protection TH3 / NPF 500
- Outer control of the direction and intensity of the air in the helmet
- Lightweight and durable


CODE: R813100

\$1945.00
KIT
HOT BUY!

For order enquiries please contact us on 1300 062 947 or sales@maxisafe.com.au

maxisafe.com.au
Ironclad
BY BRIGHTON-BEST INTERNATIONAL

THE PERFECT FIT FOR ANY JOB


SAFETY & LIFTING

SAFETY STEP

- 250kg capacity load
- Indented steps on all four sides



\$69 INC GST

P/N: SSR002

ROLLING SAFETY STEP INSERT

- Spring loaded castors
- Designed for use with Richmond safety step



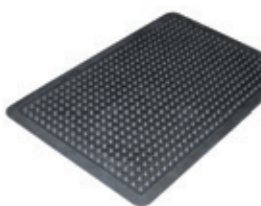
\$44 INC GST

P/N: SSR003

ANTI-FATIGUE MAT BLACK BORDER

NEW

600mm x 900mm



\$39.95 INC GST

P/N: FMR001

900mm x 1200mm

\$69.95 INC GST

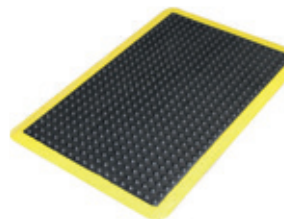
P/N: FMR002

- Specifically designed to massage the feet
- Black flexible domed top surface

ANTI-FATIGUE MAT YELLOW BORDER

NEW

600mm x 900mm



\$74.95 INC GST

P/N: FMR003

900mm x 1200mm

\$125 INC GST

P/N: FMR004

- Specifically designed to massage the feet
- Black flexible domed top surface

R RICHMOND
ROLLING SOLUTIONS

52L RECYCLABLE CRATE BLACK

- Made from sturdy polypropylene
- 52 Litre capacity
- 650mm(L) x 410mm(W) x 275mm(H)



\$23.95 INC GST

P/N: SNR001RWCBLK

240L CAPACITY GREEN WHEELIE BIN

- Made from HDPE
- 240 Litre capacity



\$119.00 INC GST

P/N: WGR029

LUG BOX (GREEN)

- Made from sturdy polypropylene
- 66 Litre capacity
- 610mm(L) x 425mm(W) x 320mm(H)



\$32.95 INC GST

P/N: BXR008RWCGRN

2 & 3 SHELF STOCK PICKER TROLLEYS

- 945mm(L) x 650mm(W) x 750mm (H) platform dimensions
- 250kg load capacity



\$340 INC GST

P/N: SPR002



\$433 INC GST

P/N: SPR007

R RICHMOND
ROLLING SOLUTIONS



1300 100 120 | austlift.com.au

VERTICAL DRUM LIFTER

P/C: 144002

W.L.L.: 500KG

\$155.00

GREAT VALUE!



WEB SLING DRUM LIFTER

P/C: 144003

W.L.L.: 500KG

\$95.00

GREAT VALUE!



DRUM TROLLEY HEAVY DUTY

P/C: 145030

W.L.L.: 600KG

\$149.00

GREAT VALUE!



SNATCH BLOCK SHACKLE HEAD

Complies with AS/NZS 2089

P/C	Rope Dia	W.L.L.	Price
140106	13-16mm	6.0t	\$249.00
140108	16-18mm	8.0t	\$329.00
140110	18-20mm	10.0t	\$549.00



CHAIN BLOCK W4

Complies with AS/NZS 1418.2

P/C	Lifting	W.L.L.	Price
110005	3M	0.5t	\$129.00
110010	3M	1.0t	\$149.00
110020	3M	2.0t	\$219.00



AUSSIE FETCH MINI CRANE

Complies with AS/NZS 1418.11

P/C: 145080

W.L.L.: 400KG

\$1999

GREAT VALUE!



FREIGHT CHARGES MAY APPLY



LADDERS & WHEELS

HOT DEALS STORE WIDE



AUSTRALIA'S MOST TRUSTED LADDER

DOUBLE SIDED A-FRAME ALUMINIUM INDUSTRIAL 180KG HEAVY DUTY



NEW

\$229

SM004-HD (1.2M/4FT)



\$529

SM008-HD (2.4M/8FT)



ALSO AVAILABLE
SM003-HD (0.9M/3FT) \$159
SM006-HD (1.8M/6FT) \$339
SM010-HD (3.0M/10FT) \$829
SM012-HD (3.6M/12FT) \$989

EXTENSION LADDER ALUMINIUM 150KG INDUSTRIAL



\$469

EL12/21-IH (12-21FT)

MULTI-PURPOSE LADDER ALUMINIUM 120KG INDUSTRIAL

NEW

\$309

MM11-I (1.07-3.3M)



ALSO AVAILABLE
MM15-I (A-FRAME 1.2-2.1M
EXTENSION 2.7-4.5M) \$359
MM19-I (A-FRAME 1.7-2.8M,
EXTENSION 3.3-5.8M) \$549

ALSO AVAILABLE
EL8/13-IH (8-13FT) \$319
EL10/17-IH (10-17FT) \$389
EL14/25-IH (14-25FT) \$717

GORILLA ALUMINIUM EXPANDA SCAFF

\$1,495

GS-01 CORE PACK



The Expanda Scaffold incorporates a unique design that allows you to expand up and out by adding additional free standing core packs, making it incredibly versatile.

ALSO AVAILABLE
GS-02 SCAFFOLD OUTRIGGER PACK \$459
GS-03 SCAFFOLD JOINER PACK \$376

\$977

GS-01A RISER PACK



FORMWORK PROPS GALVANISED STEEL

\$139

PROP-198 (1.98-3.35M)

Gorilla Formwork Props are a must for almost every building site. The adjustable load bearing product is ideal for supporting ceilings, walls and other structures.

PROP-120 WLL: 2300kg (1.2m) 2600kg (1.8m)
PROP-198 WLL: 3000kg (1.98m) 1400kg (3.35m)
PROP-230 WLL: 1300kg (2.3m) 2600kg (3.35m)

ALSO AVAILABLE
PROP-120 (1.2-1.8M) \$106
PROP-230 (2.3-3.8M) \$181



200MM TUBE TYPE SCAFFOLD CASTOR



- Polyurethane Tyred Cast Iron Centred
- 700kg load capacity

\$115

INC GST

P/N: S883B

200MM ADJUSTABLE THREAD TYPE SCAFFOLD CASTOR



- Polyurethane Tyred Cast Iron Centred
- 700kg load capacity

\$155

INC GST

P/N: S879B

200MM POLYURETHANE TYRED NYLON CENTRED WHEEL



- Suits scaffold castors
- 700kg load capacity

\$49.95

INC GST

P/N: PU8079-75

R RICHMOND
ROLLING SOLUTIONS

- Complies with AS 1892 standards
- 150kg safe working load



2 STEP LADDER

- 810mm ladder height

\$199

INC GST

P/N: CSL200



3 STEP LADDER

- 1275mm ladder height

\$289

INC GST

P/N: CSL300



4 STEP LADDER

- 1500mm ladder height

\$409

INC GST

P/N: CSL400

R RICHMOND
ROLLING SOLUTIONS

MATERIALS HANDLING



BEAVER SAFETY CARGO NETS

- Multiple webbing loops and eyelets
- 4x Tie Ropes and 4x Cam Buckles
- UV stabilised and tightly woven mesh
- Integrated D rings to assist holding down
- For trailers, utes, boats, 4WD's and trucks
- Convenient heavy duty storage bag



CODE	DESCRIPTION	PRICE
NETSYS1	Small (2.46m x 2.46m)	\$399.00
NETSYS2	Medium (2.8m x 2.84m)	\$406.00
NETSYS3	Large (2.8m x 3.44m)	\$489.00

BEAVER WEB DOG 50MM RATCHET ASSEMBLY

Code: 348000WF

- Fitted with 8mm grab hooks
- 1m of 50mm heavy duty webbing



\$125.00
GREAT VALUE

BEAVER MULTIPURPOSE HAND RATCHET & STRAP

- Low strain & long life
- Durability demanded in flatbed tiedown situations



CODE	DESCRIPTION	PRICE
RTD055PL	50mm x 9m, LC 2500kg, c/w hook & keeper	\$19.95
349035RB	35mm x 6m, LC 1500kg, c/w hook & keeper	\$17.95
349025RB	25mm x 5m, LC 500kg, c/w hook & keeper	\$15.95
349025RSB	25mm x 4m, LC 450kg, c/w S Hooks	\$16.95

BEAVER TRUCKERS SILVER LASHING ROPE 10MM

Code: 347010HD

- Synthetic polyethylene fibres



\$119.00
SPECIAL PRICE

BOX OF 10

MATERIALS HANDLING



BEAVER GRADE 70 RATCHET LOADBINDER

- Grade 70
- With winged eye grab hooks
- Complies to AS/NZS 4344



CODE	DESCRIPTION	PRICE
344008	7-8mm, LC 3800kg	\$67.00
344010	10mm, LC 6000kg	\$60.00
344013	13mm, LC 9000kg	\$105.00

BEAVER JAX BOTTLE JACK

- Wide base for stability & strength
- Heavy duty, steel construction
- Available in a variety of sizes: 4 to 20 tonnes capacity



CODE	DESCRIPTION	PRICE
JAX004	Jack Bottle 4t Black Jax	\$79.00
JAX006	Jack Bottle 6t Black Jax	\$85.00
JAX008	Jack Bottle 8t Black Jax	\$115.00
JAX010	Jack Bottle 10t Black Jax	\$135.00
JAX015	Jack Bottle 15t Black Jax	\$150.00
JAX020	Jack Bottle 20t Black Jax	\$220.00

BLACK RAT GRUNT 12V AIR COMPRESSOR

Code: GC400



\$149.00
GREAT VALUE

HUGE AIR FLOW TO 150psi

BLACK RAT 4WD TOWING KIT

Code: 342309BK



\$210.00
GREAT VALUE

BLACK RAT 4WD SAFETY RECOVERY KIT

Code: 342350BK



\$395.00
GREAT VALUE

INCLUDES CARRY BAG

6" Solid Wheel

350KG Jockey Wheel
Swivel U Bolt Clamp

\$59⁹⁵
#R2112AC



6" Mag Wheel

350KG Jockey Wheel
Swivel U Bolt Clamp

\$89⁰⁰
#R2112A



8" Mag Wheel

350KG Jockey Wheel
Swivel U Bolt Clamp

\$89⁰⁰
#R2124A



10" Mag Wheel

350KG Jockey Wheel
Swivel U Bolt Clamp

\$105⁰⁰
#R2114UB



Bearing Kit

With Seal, Cap and Split Pin



*R1961

\$19⁹⁵
#R1960 (LM)

\$19⁹⁵
#R1961 (SLM)

Marine Bearing Kit

With Seal, Cap and Split Pin



*R1960M

\$21⁹⁵
#R1960M (LM)

\$21⁹⁵
#R1961M (SLM)

KOYO Bearing Kit

With Seal, Cap and Split Pin



*R1970B

\$29⁹⁵
#R1969B (LM)

\$29⁹⁵
#R1970B (SLM)

LED Tail Lights

Left & Right with Number Plate Light

*Sold Separately



Left Hand

Right Hand with
Numberplate Light

TradeSmart
MATES RATES!

\$26⁹⁵
#R4122LEDLH

\$31⁹⁵
#R4122LEDRH

ALL STATES
TRAILER SPARES
Tuff Stuff



LUBRICATION & REELS



WORKSHOP SPECIALIST ESSENTIALS



\$99.00
GREAT VALUE!

600A ALEMLUBE 450G LEVER GREASE GUN

- Grease pressures of up to 12,000psi (828bar)
- Delivers up to 1.6g of grease per stroke
- Ever-Flow System enables the gun to be used with thick/tacky greases up to NLGI2
- High pressure, high volume option
- Bulk filling capacity of 500g

\$599.00
GREAT VALUE!

G10040N EL SERIES 450G 18V CORDLESS GREASE GUN

- Generates grease pressures of up to 10,000psi (690bar)
- Capable of delivering up to 80g/min
- 25 minutes continuous working time
- Supplied with two Li-ion batteries
- Carry case included

\$1,658.00
GREAT VALUE!

424150 SAMOA 20KG MOBILE GREASE KIT

- High pressure 55:1 ratio pump
- Up to 7,950psi (548bar) grease pressure
- Cast alloy dual cylinder air motor
- Built in filter protects against pump/tube contamination
- Suitable for use with thick tacky greases



52007 ALEMLUBE 1" MANUAL DIESEL FUEL NOZZLE

- Capable of flow rates up to 150L/min
- Ideal for farm tank applications
- Suitable for gravity feed applications & applications with pressures of up to 140psi (10bar)



\$69.00
GREAT VALUE!

FA2 ALEMLUBE 1" FUEL FILTER

- Fuel filter suitable for use with gravity feed fuel tanks and with hand, air or electric drum pumps
- Features a 10 micron fuel filter element, a drain cock and a replaceable clear plastic bowl
- 1" BSP(f) inlet/outlet
- Replacement elements readily available



\$179.00
GREAT VALUE!

52000 ALEMLUBE 12V BATTERY DIESEL PUMP KIT

- Capable of flow rates of up to 50L/min
- Includes 4m of antistatic fuel delivery hose, 2m of battery cable, a stainless steel & brass fuel filter and an automatic shut-off nozzle
- Maximum head capacity of 15m
- Self priming vane pump includes a built-in bypass

\$615.00
GREAT VALUE!



CR30050 EL SERIES 240V 10AMP ELECTRIC CABLE REEL

- Supplied with 20m of 3 x 1.5mm² cable
- 1,000W, when uncoiled 2,000W
- Thermal overload protection
- CE Approved & Australian Industry Standards compliant

\$399.00
GREAT VALUE!

Also available:
CR30060



EVRP2405 ALEMLUBE 240V EV CHARGING HOSE REEL

- 5m charging cable with Type 2 power supply connector
- Type 2 vehicle connector supplied standard
- Circuit breaker manually restorable
- Type 1 connector available on request

\$2,370.00
GREAT VALUE!



L60040PA ALEMLUBE 600L TANK LOCKABLE DIESEL PUMP KIT

- Australian made, heavy duty, robustly constructed polyethylene tank
- 600L capacity
- Flow rates of up to 40L/min
- Built in nozzle holster
- Unique user friendly design with lockable lid to aid fuel and dispensing kit security
- Dispensing kit consists of a 12V pump, 4m antistatic fuel delivery hose, 2m battery cables and automatic nozzle

Also available:

L45040PA

\$1,799.00
GREAT VALUE!

L20040PA

\$1,325.00
GREAT VALUE!

L10040PA

\$1,215.00
GREAT VALUE!



On Australian made tanks

2 YEAR WARRANTY

On Italian made pumps



*Applies to the vast majority of Alemlube products unless indicated otherwise



LUBRICATION, REELS & TANKS


macnaught
**MDT 300L**
\$1589
 GREAT VALUE!
**MDT 600L**
\$1920
 GREAT VALUE!
**MDT 800L**
\$3099
 GREAT VALUE!
**MDT 1000L**
\$3190
 GREAT VALUE!
**MDT 1200L**
\$3569
 GREAT VALUE!
POLY DIESEL TANKS

- Equipped with premium quality 12V Electric diesel pump kit
- 300L / 600L - 40 LPM pump
- 800L / 1000L / 1200L - 85 LPM pump
- Automatic nozzle
- Lockable lid for security


TANK 15 YEARS
 MACNAUGHT WARRANTY

PUMP 5 YEARS
 MACNAUGHT WARRANTY

FREE  **macnaught K29-01** (VALUED AT RRP \$155) WITH ANY MDT TANK
**C1 ELECTRICAL CABLE REELS (240V)**

- Automatic spring rewind
- Thermal overload protection
- 1.5 metre feed cable
- SAA: AS/NZS 3105 Compliant

**C1EC10A20D-AU**

10A x 20m

\$430
 GREAT VALUE!
C1EC15A20D-AU

15A x 20m

\$465
 GREAT VALUE!

2 YEARS
 MACNAUGHT WARRANTY
C1 BARRIER REELS

- Tape Lock Off function to maintain barrier tape tension
- Magnetic tape anchor point
- 48mm x 25m Tape
- Woven Tape

**C1BRW5025Y**

Red/White Tape

\$255
 GREAT VALUE!
C1BYB5025Y

Yellow/Black Tape

\$255
 GREAT VALUE!

2 YEARS
 MACNAUGHT WARRANTY
R3 COMPRESSED AIR/WATER REEL

- Pressure Rating - 250 psi
- Inlet/Outlet
- AW320B - 3/8"BSP (F) / 1/4"BSP (M)
- AW420B - 3/8"BSP (F) / 3/8"BSP (M)
- Reinforced PVC hose

**AW320B-01**

3/8" x 20m

\$369
 GREAT VALUE!
AW420B-01

1/2" x 20m

\$419
 GREAT VALUE!

10 YEARS
 MACNAUGHT WARRANTY
R3 OXY/ACET REEL

- Pressure Rating - 175 psi
- 5mm twin hose x 15m
- Inlet/Outlet - Gas Thread/Gas Thread
- Reinforced Rubber hose (AS1335)

**OA215B-04**

5mm x 15m

\$615
 GREAT VALUE!

10 YEARS
 MACNAUGHT WARRANTY
LEVERGUN®450G GREASE GUN**K45-01**

- Delivery pressure up to 82,750 kPa (12,000 psi)
- Up to 1.5g per shot
- Maximum viscosity - Up to NLGI 2
- Supplied with 150mm steel extension and KY coupler


\$119
 GREAT VALUE!

10 YEARS
 MACNAUGHT WARRANTY
P3 POWERLUBE™ 20KG GREASE KIT**P3-01C**

- 50:1 Ratio Pump
- KY Supergrip coupler
- ZSB high pressure swivel
- Supplied with Pump, lid, follower, 4m high pressure grease hose and B2 Booster gun


\$1499
 GREAT VALUE!

10 YEARS
 MACNAUGHT WARRANTY
**ALL PURPOSE OIL TRANSFER PUMP****MAOP20**

- Suitable for oils up to SAE140 / ISO680 viscosity
- Suits between 20L - 25L drums
- Delivers up to 75ml per stroke

\$67
 GREAT VALUE!

2 YEARS
 MACNAUGHT WARRANTY
**ROTARY VANE PUMP****RVP-01**

- Suits both 205 & 60 L drums via sliding bung adaptor
- Delivers up to 20 LPM (in both directions)
- Suitable for Diesel, Kerosene and oils up to SAE90

\$319
 GREAT VALUE!

10 YEARS
 MACNAUGHT WARRANTY
**MULTI-PURPOSE GEAR OIL PUMP****C7-01**

- Compatible fluids - kerosene, two stroke mix, lubricating oils up to SAE140
- Pump output: 100 ml/stroke
- Compatible with most drum sizes from 15 - 25 L

\$183
 GREAT VALUE!

10 YEARS
 MACNAUGHT WARRANTY

Terms & Conditions: *Stock Subject to availability. While stocks last. Warranty subject to Macnaught Terms & Conditions. ©Macnaught Pty Ltd, 2024.

macnaught.com

Engineered To Perform
hi-tecoils.com.au


SEALANTS & ADHESIVES



ALL COLOURS
\$7.95

RS-60 ALL-IN-ONE SILICONE SEALANT

- High performance in any environment
- Highly adhesive & extremely durable
- UV resistant
- Waterproof formula
- Primed or un-primed surfaces

ANTI-FUNGAL

RESISTANT TO MOULD

NO FADING
NO CRACKING
NO SHRINKING
NO ABRASION

Rapidstick

300ML CARTRIDGE

BLACK	8-RS60BK-300
CLEAR	8-RS60CL-300
GREY	8-RS60GY-300
SILVER	8-RS60SV-300
WHITE	8-RS60WT-300

CONSTRUCTION GRADE • LIFETIME PERFORMANCE



LIQUID-FIX CONSTRUCTION ADHESIVE

- Adheres to wet or dry timber
- Weather & mould resistant
- Non-sagging with high adhesion
- Odourless
- Environmentally safe
- Low VOC content
- No toxicity

NON-FLAMMABLE

JUST LANDED!
\$4.95

Rapidstick

300ML CARTRIDGE

BEIGE 8-RS50BG-300

STRONG-AS-NAILS & IMPACT RESISTANT
HOLDS UP TO 597 PSI
MEETS AUST STANDARD AS 2329-1999



Rapidstick

PRICED FROM...
\$22.95

GASKET SEALANTS



8515 • FLEXIBLE BONDING FOR MACHINED SURFACES

- Med strength gel for gaps up to .40mm
- Fast curing for formed-in-place repairs
- Excellent for pumps, thermostats, compressors & transmission housings

SIZE	PART #	INC. GST
50ml Tube	8515-50	\$22.95
250ml Tube	8515-250	\$95.00
300g Cartridge	8515-300	\$105.00

FAST CURING

MEDIUM STRENGTH GEL

-54°C TO +148°C

SEALS & FILLS IRREGULAR SURFACES

IMMEDIATE LOW PRESSURE RESISTANCE

8518 • SEMI-FLEX BONDING ON CONTAMINATED SURFACES

- Med strength gel for gaps up to .50mm
- High oil, grease, and chemical resistance
- Ideal for cast iron, steel, and aluminium flanges

SIZE	PART #	INC. GST
50ml Tube	8518-50	\$23.95
250ml Tube	8518-250	\$95.00
300g Cartridge	8518-300	\$105.00



Rapidstick THREAD SEALANTS

50ML TUBES
\$23.95

8567 • HIGH LUBRICATION & COARSE FITTINGS

- For all metal types, incl. s/steel, aluminium, & galvanised metals.
- Temps up to +204°C
- Contains PTFE
- Colour: White

SIZE	PART #
50ml	8567-50

8577 • POTABLE WATER & GASES

- Soft setting paste
- Class III methacrylate ester
- Contains PTFE
- Pressures up to 2,000 kPa
- Colour: Yellow

SIZE	PART #
50ml	8577-50

AGA CERTIFIED FOR GAS



Rapidstick RS-80 HI TEMP GASKET MAKER

- MOST SURFACES
- AUTOMOTIVE
- INDUSTRIAL
- MARINE
- INDOORS & OUT

\$34.90
ALL COLOURS

200ML AUTO-DOSE CARTRIDGE



- New generation low odour RTV
- Neutral curing & non-corrosive - does not release acids
- For demanding applications with extreme temperatures and/or high thermal cycling
- Retains flexibility up to 300°C
- Resistant to oil, water & most chemicals
- Suitable on sensitive metals & most non-primed surfaces

NEW!

BLACK	8-RS80BK-200
RED	8-RS80RD-200
GREY	8-RS80GY-200

Rapidstick INSTANT ADHESIVES

COMPATIBLE WITH ROUGH, POROUS & ACIDIC SURFACES

FAST CURING, HIGH STRENGTH BOND

8401 • SURFACE INSENSITIVE

- Ideal for repair applications
- Medium viscosity
- Fills gaps up to .20mm

SIZE	P/N
50g	8401-50
50g	8406-50

8406 • WICKING GRADE

- Rubber & metal bonding
- Low viscosity
- Fills gaps up to .05mm

50G BOTTLES
\$17.95



THREADLOCKED AT
\$21.95



Rapidstick THREADLOCKERS

TOLERATES MINOR SURFACE CONTAMINATION

8243 • BLUE

- Medium & coarse threads
- Plated parts & stainless steel
- Non-permanent bond
- Fills gaps 6mm - 20mm

8263 • RED

- Large bolts & studs
- Active or passive metals
- Permanent bond
- Fills gaps up to 25mm

GREAT CONTROLLED FRICTION & TORQUE/TENSION RATIO

SIZE	P/N
50ml	8243-50
50ml	8263-50

CHEMICALS & PAINT

TREFOLEX CDT CUTTING OIL
3063

- Superior lubricant
- Extreme pressure resistant – increases tool life and improves cutting

\$16⁹⁵

INC GST

300g**CRC DRY GLIDE**
3040

- Penetrates and bonds (plates) to most surfaces
- Contains PTFE
- Extremely low co-efficient of friction

\$17⁹⁵

INC GST

150g**CRC NF 5-56**
1754519

- Multi-purpose service spray that penetrates, lubricates and prevents corrosion
- Superior penetrating power

\$21⁹⁵

INC GST

400g**CRC NF TAC-2**
1754520

- Ideal for mining and areas with low ventilation
- Non-conductive and Non-corrosive ensuring safety during use

\$23⁹⁵

INC GST

400g

www.crcindustries.com.au

**CRC EMPTY PUMP SPRAYER**
4015

- Solid sprayer with durable seals
- Continuous and adjustable spray pattern

\$79⁹⁵

INC GST

1L**CRC EVAPO-RUST SPRAY GEL**
1753336

- Rust Remover Clings to surfaces
- Powerful Non-scrubbing No need to soak

\$23⁹⁵

INC GST

500g**CRC AEROCLEAN DEGREASER**
5070

- Quickly dissolves grease, oil and dirt
- Cleans iron, steel, aluminium, magnesium and copper

\$9⁹⁵

INC GST

400g**CRC BATTERY TERMINAL PROTECTOR**
5098

- Easy to apply aerosol
- Flexible film
- Completely encapsulates exposed surfaces

\$14⁵⁰

INC GST

300g

www.crcindustries.com.au



MORE COLOURS AVAILABLE

Dy-Mark

**\$42⁹⁵**
1L EACH**\$270⁰⁰**
10L EACH**\$130⁰⁰**
4L EACH**TREADRITE**

Slip Resistant Coating

- Ideal for interior and exterior untreated timber, concrete, primed metal and brick & clay pavers.
- Creates durable slip resistant surfaces.
- Resists cracking, peeling and exposure to petrol, oil and mild chemicals.
- Easy to apply with uniform coverage.

MORE COLOURS AVAILABLE:

- CLEAR - 1L P/N: 23060100, 4L P/N: 23060400, 10L P/N: 23061000
- BLACK - 1L P/N: 23060101, 4L P/N: 23060401, 10L P/N: 23061001
- YELLOW - 1L P/N: 23060105, 4L P/N: 23060405, 10L P/N: 23061005

MORE COLOURS AVAILABLE

Dy-Mark

P/N: 41015003
BLUEP/N: 41015011
WHITEP/N: 41015005
YELLOWP/N: 41015002
RED**\$12⁹⁰**
INC GST
EACH**MORE COLOURS AVAILABLE:**

- GREY - P/N: 41015013
- ORANGE - P/N: 41015006
- MATT BLACK - P/N: 41015001
- GREEN - P/N: 41015004
- HAND ACTUATOR WHITE AEROSOL
P/N: 41035011
- HAND ACTUATOR YELLOW AEROSOL
P/N: 41035035

3X LONGER LASTING*

*Lasts up to 3 times longer than standard acrylic based line marking paints.

\$24⁹⁵
INC GST
EACHP/N: 41025005
YELLOWP/N: 41025011
WHITE**MARXMATE**
PROFESSIONAL MARKING TOOL**THE PERFECT DRILLING COMPANION**

FOR ELECTRICAL, PLUMBING, BUILDING AND DIY MARKING JOBS

\$14.95

USE ON DEPTHS UP TO 50mm
250+ BURSTS
IN EVERY PEN



ADHESIVES, HAND CLEANING & AIR TOOLS

GAP FILLING EXPANDING FOAM - STRAW

- Excellent stability (no shrinkage or postexpansion)
- High filling capacity
- Good adhesion on all surfaces (except PE, PP and PTFE)
- High insulation value, thermal and acoustic
- Very good bonding properties, Freon free

500ML

\$9.95

GREAT VALUE!

153470

750ML

\$11.95

GREAT VALUE!

127968

GENIUS GUN GAP FILLING EXPANDING FOAM

- Excellent stability
- High filling capacity
- Good adhesion on all surfaces
- High insulation value, thermal and acoustic
- Very good bonding properties

500ML

\$11.95

GREAT VALUE!

132272

750ML

\$17.95

GREAT VALUE!

130373

GENIUS GUN FLEXIBLE INSULATION FOAM

- 3 times more flexible than standard PU foam
- Airtight (see IFT-report)
- Water Vapour Open
- Excellent stability (no shrinkage or postexpansion)
- High filling capacity
- Good adhesion on all surfaces
- High insulation value, thermal and acoustic

750ML

\$19.95

GREAT VALUE!

130425

T-REX POWER FAST GRAB

- Beach Sand 128463
- Bright White 121968
- Jet Black 124435
- Quick Silver 128462
- Steel Grey 121970

290ML

\$14.95

GREAT VALUE!

T-REX POWER FAST GRAB

- Clear 134912

290ML

\$18.95

GREAT VALUE!

T-REX POWER CRYSTAL

- Crystal 121969

290ML

\$17.95

GREAT VALUE!

STRONG AS NAILS SUPER GRAB (GRAB & GO PACK)

- High performance
- Super initial grab
- Cartridges made from recycled materials
- Ideally for bonding heavy materials 144902

20 X 350GM

\$119

GREAT VALUE!

STRONG AS NAILS FIX IT (GRAB & GO PACK)

- Multi-purpose
- High performance
- High bond strength
- Easy to gun
- Waterproof packaging
- Excellent adhesion to most building materials 144904

20 X 350GM

\$89.00

GREAT VALUE!

SEPTONE ELIMINATOR HAND CLEANER 4L PN: IHPE4

- Unique hydrocarbon solvent free
- Waterless, silicone free
- Removes a wide range of paints

\$84.95

4L

\$16.95

500ML

SEPTONE ELIMINATOR HAND CLEANER 500ML PN: IHPE500

SEPTONE CITRA SCRUB HAND CLEANER 20KG PN: IHCS20

- Waterless, citrus based
- Contains natural scrubbers
- Removes ingrained dirt & grime

\$179.00

20KG

\$49.95

4L

SEPTONE CITRA SCRUB HAND CLEANER 4L PN: IHCS4

SEPTONE CITRA SCRUB HAND CLEANER 500ML PN: IHCS500

\$13.95

500ML

PERMATEX 25217 FAST ORANGE PUMICE HAND CLEANER P/P 1.8L PN: PX25217

- Biodegradable, petroleum solvent free hand cleaner
- Fortified with premium skin conditions
- Fine pumice deep cleans the toughest dirt

\$24.95

GREAT VALUE!

PERMATEX 25618 FAST ORANGE XTR HAND CLEANER P/P 3.78L PN: PX25618

- Professional grade formulation
- Advanced skin restoration conditioners protect hands against drying & cracking

\$49.95

GREAT VALUE!

M7 1/2" AIR IMPACT WRENCH

- Lightweight, only 1.7kg
- Powerful, 1650Nm (1200ft-lb) Max Torque
- Extra heavy duty twin hammer
- Value for money, high quality & specs
- 25mm Bolt capacity

EASY GREASE ANVIL SERIES

\$470.00

GREAT VALUE!

M7-NC4255QH



M7 3/4" AIR IMPACT WRENCH

- Lightweight composite body, only 1.9kg
- Low noise level, only 85dB
- Powerful, 1900Nm (1400ft-lb) Max torque!
- Compact - Only 198mm Length
- 25mm Bolt capacity

EASY GREASE ANVIL SERIES

\$765.00

GREAT VALUE!

M7-NC6255QH



M7 COMPACT AIR DIE GRINDER

- Length: 155mm
- Net weight: 0.38kg
- Includes 1/4" & 1/8" collets
- Free speed: 25,000rpm
- Rated power: 0.3hp

\$169.00

GREAT VALUE!

M7-QA111B



M7 AIR NEEDLE SCALER

- Blows per minute: 5500bpm
- Net weight: 1.3kg
- Needle size: 3x123mm (12 per set)
- Overall length: 290mm

\$295.00

GREAT VALUE!

M7-SN1288



HOT DEALS STOREWIDE!

COMPRESSORS

C16

AIR COMPRESSOR

- Filter / regulator
- 453 Lt/min Displacement
- 328 Lt/min F.A.D.
- 3 Cylinder cast-iron pump
- 2.4kW / 3.2HP motor
- 240V, 15Amp
- 60 litre tank


\$1790
TECHTOP MOTOR

AB12

AIR COMPRESSOR

- Filter / regulator
- 259 Lt/min Displacement
- 189 Lt/min F.A.D.
- 2 Cylinder ABAC pump
- 1.86kW / 2.5HP motor
- 240V, 10Amp
- 50 Lt tank


\$999
GREAT VALUE

C16L-HP

AIR COMPRESSOR

- High pressure – 160 psi
- Filter / regulator
- 410 Lt/min Displacement
- 328 Lt/min F.A.D.
- 2.4kW / 3.2HP Techtop motor
- 240V, 15Amp
- 125 litre tank
- Forklift feet


\$2799
HIGH PRESSURE
**CELEBRATING
70 YEARS**

ITM 2.5HP BELT DRIVE AIR COMPRESSOR

- Heavy-duty industrial pump
- Durable copper wound motor
- 240V, 10amp
- F.A.D. 257 L/min
- Max. pressure 145psi (10 Bar)
- Filter regulator with "Nitto style" coupler
- Large 60L tank


\$999.00
GREAT VALUE!
TM351-25060

ITM 3HP BELT DRIVE AIR COMPRESSOR

- Heavy-duty industrial pump
- Durable copper wound motors
- 240V, 15amp
- F.A.D. 328 L/min
- Max. pressure 145psi (10 Bar)
- Filter regulator with "Nitto style" coupler
- Large 90L tank


\$1429.00
GREAT VALUE!
TM351-30090

ITM 5.5HP PETROL BELT DRIVE AIR COMPRESSOR

- Powered by Honda GX160 5.5hp engine
- Heavy-duty cast iron cylinder with aluminum head
- F.A.D. 355 L/min
- Max. pressure 145psi (10 Bar)
- Filter regulator with "Nitto style" coupler
- Large 60L tank


\$2299.00
GREAT VALUE!
TM352-55060

ITM 10HP 3 PHASE, STATIONARY AIR COMPRESSOR

- Ideal for commercial workshops
- Triple cast iron cylinder pump with aluminium head
- F.A.D. 1143 L/min
- Max. pressure 145psi (10 Bar)
- Large 270L tank


\$3999.00
GREAT VALUE!
TM353-10270

\$1070
00593

Peerless Oil-less 13 Twin tank

- Free Air Delivery: 175LPM
- 2HP Single Phase motor - 10AMP
- 18L Air Receiver
- 1 year total unit warranty


\$475
PB2500

Peerless Black 2500 Direct Drive

- Free Air Delivery: 154LPM
- 2.5HP Single Phase motor - 10AMP
- 30L Air Receiver
- 1 year total unit warranty


\$1089
PB14000

Peerless Black 14000 Belt Drive

- Free Air Delivery: 220LPM
- 2.5HP Single Phase motor - 10AMP
- 50L Air Receiver • Max PSI: 145
- 1 year total unit warranty


\$415
00287

25M Metal Industrial Retractable Air Hose Reel

- 3/8" x 25M Rubber coated PVC air hose
- Full steel construction - powder coated
- 300PSI Working pressure • 1/4" BSP fittings
- 1 year total unit warranty


\$1549
00092

P13 Electric

- Free Air Delivery: 240LPM
- 2.5HP Electric motor - 10AMP
- 48L Air Receiver
- Fitted water trap filter regulator
- Warranty: 5 year pump warranty


\$2849
00105

PHP15 High Pressure

- Free Air Delivery: 300LPM
- High pressure for truck tyre inflation
- 3.5HP Electric motor - 15AMP
- 110L Fatboy Air Receiver
- Warranty: 5 year pump warranty


\$17,325
HDD10VSH-FF

10HP Variable Speed Full Feature Screw Compressor

- Free Air Delivery: 1000LPM
- High pressure for truck tyre inflation
- 99% Duty cycle for constant use
- Fitted refrigeration air dryer
- 200L Air Receiver
- Warranty: 1 year total unit



GENERATORS, PRESSURE WASHER & VICES

www.dunlite.com.au

DUNLITE
Generators

\$990

NEW PRODUCT

W.C.
WELLING & CROSSLEY

3.75 kVA Petrol E/Start Generator

WC-P3750

- Euro 5 emission compliant
- Automatic Voltage Regulator
- Long range 15L petrol tank
- Wheels, handles & battery included



EURO 5

8.75 kVA E/Start Generator

WC-P8750

- Euro 5 emission compliant
- Automatic Voltage Regulator
- Long range 25L petrol tank
- Wheels, handles & battery included

\$1695

NEW PRODUCT

W.C.
WELLING & CROSSLEY



EURO 5

5.8 kVA Petrol Generator

DGUH5S-2

- Honda GX340 recoil engine
- Euro 5 emission compliant
- Italian NSM alternator



POWERED by
HONDA

EURO 5

\$2249

GREAT VALUE

7 kVA Welder Generator

DGWGH7S-2

- Honda GX390 recoil engine
- 200 Amps welder, 240V

OPTIONAL P/N: 10-WELD-LEADS-08 \$349



POWERED by
HONDA

EURO 5

\$3249

HOT BUY!

PT70SS PLUS

- Radiant diesel heater (21KW, 70000 BTU)
- Heating area capacity 200m² (approx.)
- Fuel tank capacity 15 litres
- Non continuous spark for extremely quiet operation
- Diesel consumption 1.9 lt./h (7hrs)
- Thermostat control for maximum efficiency
- Available with optional trolley

P/N: 8.700.0001



\$847

RED HOT DEAL!

PT70SS PLUS
TROLLEY

PT70SS PLUS
PICTURED WITH OPTIONAL
TROLLEY. \$121
P/N: PT70TWK



MAINE 1409 XP

- 2600 PSI Operating pressure
- 9 LPM flowrate
- 2.40KW Universal 240V
- Industrial Spray Lance & Gun
- Suction and Delivery Stainless Steel Valves
- Integrated Detergent Suction with External Suction Hose
- 10 Metre R1 Steel Braided High Pressure Hose

P/N: 8.673.0012

\$999

GREAT PRICE!

LAVOR
SIMPLY STRONGER

www.lavorwash.com.au

FF70

- Diesel Forced Air Heater
- 70,000 BTU
- Heating Area 158sqm
- Weight 12 Kgs
- Fuel tank 19 litres
- Operating Hours 9hrs
- Thermostat controlled

P/N: 8.700.0003

\$599

BEST PRICE!



TradeSmart
MATES RATES!

BOTH
FAN FORCED

FF175

- Diesel heater
- 175,000 BTU (51.3KW) of heat
- Heating area 400sqm
- Fuel tank 49 litres
- Operating hours 10hrs
- Thermostat controlled

P/N: 8.700.0005



\$869

POWERFUL HEAT!

ITM PETROL PRESSURE WASHER

- 6.5hp Industrial grade engine
- 3200psi Max. pressure
- 9.5L per minute max. flow rate
- Maintenance-free three piston axial pump with aluminium head
- Puncture proof solid treaded wheels
- Heavy-duty powder coated frame with non-marking rubber bumper
- 1.6L On-board soap tank
- 5 Quick connect spray tips
- 2-Year trade warranty

\$739.00

GREAT VALUE!

TM540-3200



ITM PETROL PRESSURE WASHERS

- High quality Honda engines
- Renowned Annovi Reverberi pumps
- EPA & EMC certified
- Puncture proof solid treaded wheels
- Heavy-duty powder coated frame
- Quick connect hoses
- Quick connect spray tips
- 2-Year trade warranty
- 3-Year Honda engine warranty

POWERED by
HONDA



Engine	5.5hp GP160	6.5hp GX200	13hp GX390
Max. Pressure	2500psi	3200psi	4200psi
Max. Flow Rate	8.7 L/min	9.5 L/min	15.1 L/min
Hose Length	7.6m	10m	15m
Part No.	TM542-2500	TM542-3200	TM542-4200
Price	\$1,199.00	\$1,499.00	\$2,599.00



ITM 150MM TOW BAR HITCH VICE



- Jaw width 150mm
- Jaw opening 120mm
- Jaw depth 127mm
- Quickly and easily mounts to any 2" tow hitch
- Also bench mountable (148mm jaw opening)
- Extra heavy-duty hardened steel jaws
- Integrated anvil for shaping and beating
- 12.74kg

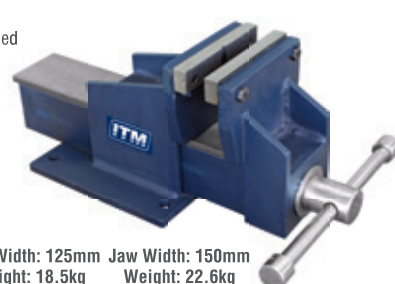
\$249.00

GREAT VALUE!

TM113-150

ITM FABRICATED STEEL BENCH VICES

- Precision machined knurled jaws with V-Groove
- Straight jaw
- Large diameter screw
- Extra heavy-duty
- Precise sliding jaw



Jaw Width: 100mm
Weight: 10.5kg

\$199.00

GREAT VALUE!

TM102-100

Jaw Width: 125mm
Weight: 18.5kg

\$369.00

GREAT VALUE!

TM102-125

Jaw Width: 150mm
Weight: 22.6kg

\$399.00

GREAT VALUE!

TM102-150

HOT DEALS STOREWIDE!

WORKSHOP

Abbott & Ashby

Abbott & Ashby bench vices are made from a high quality cast iron base and have been designed with the true professional in mind.

Industrial Bench Grinders

- Powerful Induction Motors
- 36 and 60 grit 25mm wide Aluminium Oxide grinding wheels for fast removal of material
- Wide wheel guards for greater user protection
- 'Sealed for life' ball bearings for prolonged life
- **BONUS** Crimped Wheel 200 x 25mm AAWB/200

Part Number	Size (in/mm)	Amps	Watts	Weight (kg)
ATBG600/8	8"/200	3.8	600	23

BONUS WHEEL!

RRP
\$299⁰⁰

Finishing Attachment

- Fits most 6 & 8" bench grinders.
- 915 x 50mm (36 x 2") 240 grit belt.
- 178mm (7") diameter 100 grit disc
- 89 (3.5") contact wheel
- **BONUS 5 Pack** Assorted Belts 50 x 915mm
- Part Number AA362 & AAPACK50/915-5



BONUS BELTS!

RRP
\$249⁰⁰

Heavy Duty Pedestal

- The pedestal is designed to support both 150mm & 200mm bench grinders.
- Easy to assemble with included tools
- Bucket holder on front for storage
- Part Number ATPED-HDK



Australian Family Owned for over 45 years

RRP
\$185⁰⁰

Holemaker

Drilling Solutions By ITM®

PRO 35 MAGNETIC BASE DRILL

- Quality, Compact & Robust European Made Machine
- Lightweight, only 10kg! Ideal for onsite & overhead tasks
- Capacity (diameter) 35mm
- Capacity (depth) 52mm
- Gravity feed coolant system with magnetically attached bottle
- Dual rail slide system
- Comes complete in plastic carry case

GREAT VALUE!
\$1149⁰⁰
HMPRO35

Scan to view this machine in action



Watch Video



350MM COLD CUT T.C.T. SAW

- Saves time & money giving cool cuts that need little to no finishing, eliminating any need for grinding or cool down time
- Fully enclosed retractable guard increases user safety
- Cuts through steel up to 120mm x 120mm
- Offers an accurate, fast & clean cold cut
- Pipe vice attachment
- 3hp 240V motor, 1450rpm
- 90° - 45° swivel vice
- Supplied with T.C.T. mild steel blade



Scan to view this machine in action



Watch Video

GREAT VALUE!
\$899⁰⁰
S14

WORK SHARP SHARPENERS

WHETSTONE KNIFE SHARPENER

- Dual-grit sharpening water stone for knives and fine edge tools
- Premium 1000 grit and 6000 grit aluminium oxide sharpening stone creates incredibly sharp edges
- Sharpening base provides a stable platform and increased water control for less mess and faster clean up
- 17° and 20° removeable sharpening guides

GREAT VALUE!
\$85⁰⁰
WSBCHWHT-I

WORK SHARP SHARPENERS

PRECISION ADJUST KNIFE SHARPENER

- Sharpening angle can be easily adjusted from 15° to 30° in 1° increments to sharpen every knife you own
- 320 grit & 600 grit diamond plates to quickly restore a sharp edge, and a fine grit ceramic stone to hone an incredibly keen edge on any knife

GREAT VALUE!
\$139⁰⁰
WSBCHPAJ-I

WORK SHARP SHARPENERS

PRECISION ADJUST PRO KNIFE SHARPENER

- Professional-level sharpener with metal construction
- Includes 7 abrasive grits: 220, 320, 400, 600 and 800 diamond, Fine Ceramic, Leather Strop
- 15-30° Adjustable angle, includes digital angle indicator
- Small knife table for small 'pen knives' to angles as low as 15°
- 3-Year Warranty

GREAT VALUE!
\$549⁰⁰
WSBCHPAJ-PRO

WORK SHARP SHARPENERS

KEN ONION EDITION KNIFE & TOOL SHARPENER

- 240V Electric knife sharpener
- The 3/4" x 12" premium, flexible engineered abrasive belts sharpen virtually any shape or type of knife
- The sharpening guide is fully adjustable in 1° increments from 15° to 30°
- Variable speed control 6000 - 14000rpm

GREAT VALUE!
\$450⁰⁰
WSKTS-KO

PEDESTAL DRILLS

- Quality casting, construction & componentry
- Emergency stop NVR safety switch
- Chuck safety guard
- Drill chuck & arbor

- 16mm capacity
- 16mm B16 chuck
- #2 MT Spindle
- 3/4hp, 240V motor
- 16 speed
- 1580mm height
- 50kg weight

GREAT VALUE!
\$595⁰⁰
TD1316F

- 20mm capacity
- 20mm B22 chuck
- #3 MT Spindle
- 1hp, 240V motor
- 12 speed
- 1600mm height
- 64kg weight

GREAT VALUE!
\$749⁰⁰
TD1420F

- 25mm capacity
- 20mm B22 chuck
- #3 MT Spindle
- 2hp, 240V motor
- 12 speed
- 1710mm height
- 101kg weight

GREAT VALUE!
\$1195⁰⁰
TD1825F

- 32mm capacity
- 20mm B22 chuck
- #4 MT Spindle
- 2hp, 240V motor
- 12 speed
- 1710mm height
- 114kg weight

GREAT VALUE!
\$1449⁰⁰
TD2032F

HEAVY-DUTY BENCH GRINDER STAND

For use with most 150mm, 200mm and 250mm BENCH GRINDERS

*Parts tray & bench grinder not included

Part No. TM403-016



Heavy-duty steel construction with a powder coat finish and 860mm work height



Mount for parts bin / water tray

FOLLOW US ON FACEBOOK

DRILLING

PHILLIPS POWER BITS



Part No.	Size	Length (mm)	Pack Qty.	Price
01120201M	PH1	50	2	\$4.95
01120202M	PH2	50	2	\$4.95
01120502M	PH2	50	5	\$11.00
04221502M	PH2	50	15	\$24.95
01120203M	PH3	50	2	\$4.95

SLOT POWER BITS



Part No.	Size	Length (mm)	Pack Qty.	Price
02620207M	8-10	50	2	\$3.95
02620208M	10-12	50	2	\$3.95
02620239M	0.8 x 5.5	50	2	\$3.95
02660139M	0.8 x 5.5	150	1	\$4.95
02660141M	1.0 x 6.0	150	1	\$4.95

1/8" IN-HEX POWER BITS



Part No.	Size	Length (mm)	Pack Qty.	Price
02720233M	3mm	50	2	\$4.95
02720234M	4mm	50	2	\$4.95
02720235M	5mm	50	2	\$4.95
02720236M	6mm	50	2	\$4.95

IMPACT
RATED

SURETORQ

1/4" SQUARE POWER BITS



Part No.	Size	Length (mm)	Pack Qty.	Price
01320201M	SQ1	50	2	\$4.95
01320202M	SQ2	50	2	\$4.95
04221522M	SQ2	50	15	\$24.95
01320203M	SQ3	50	2	\$4.95
01340102M	SQ2	100	1	\$4.50

BORDO
INDUSTRIAL TOOLS

18-38MM

23/32-1.1/2" Part No. 2210-1838

8-22MM

5/16-7/8" Part No. 2210-822

CHAMFER AND DE-BURR BOLTS, PIPE, THREADED ROD, BAR AND DOWELS. M2-HSS FOR EXTREME TOOL LIFE.

Create a perfect chamfer on ferrous and non-ferrous metals including hardened steels, timber, fibreglass and plastics.

E-Z Chamfer



\$69.00
2210-822

\$135.00
2210-1838

\$75.00
8050-S5

saber

Saber Tungsten Steel Intermediate Tap and Button Die Set.

Saber Metric Coarse Intermediate Tap and HSS Tapping Drill Set. M12x1.75, M10x1.50, M8x1.25, M6x1.00, M5x0.80, M4x0.70, M3x0.50.

\$319.00
8050-S1



sutton

Superior Since 1917



FN

HSS Countersinks

- For use in steel, cast iron, brass and aluminium.

Size	P/N	Price Inc. GST
8.3mm	107CS0083	\$12.00
12.4mm	107CS0124	\$16.00
20.5mm	107CS0205	\$39.00



\$66.00
INC GST
P/N: 107RAD001

Right Angle Drill Attachment

- Turn your power drill into an angle driver
- Includes Screwdriver Bits: PH2x25, PH2x50, R2x50, Hex 5x50



\$74.00
INC GST
P/N: 107RAD370

7pc Mini Angle Driver Set

- Quickbits Mini Angle Driver
- 6x25mm insert bits: 3xPH2, 1xSL5, 1xH5, 1xR2
- Accepts 1/4" hex shank bits

sutton

Superior Since 1917



\$185.00
INC GST
P/N: 165399200

200pc HSS Bright Drill Set

- Metric Sizes: 1.0 - 6.0mm x 0.5mm rises + 3.2, 4.2, 8.0, 10.0 & 12.0mm
- Imperial Sizes: 5/64 - 7/32 x 1/64 rises + 1/4, 5/16, 3/8 & 1/2

FN



\$145.00
INC GST
P/N: 149060006

25pc HSS-Cobalt Drill Set + BONUS Countersink

- Metric sizes: 2.0 - 13.0mm
- Bonus 16.5mm Countersink

FN



\$139.00
INC GST
P/N: 15080WS3M

25pc HSS-TiN Drill Set

- For increased wear resistance delivering 3X longer life
- 1.0 - 13mm x 0.5mm rises


[FACEBOOK.COM/TRADESMARTINDUSTRIAL](https://www.facebook.com/TRADESMARTINDUSTRIAL)

DRILLING

sutton

Superior Since 1917



11pc Bi-Metal Cobalt Holesaw Maintenance Set

- Industrial quality
- 19 - 76mm

\$199⁰⁰
INC GST
P/N: H125 BM3



3pc HSS Step Drill Set

- For use in sheet metal, aluminium, plastic and fibreglass.
- Range 4-12, 9 steps
- Range 4-20, 9 steps
- Range 4-30, 14 steps

\$239⁰⁰
INC GST
P/N: D504 SET3



5pc Carbide Burr Set

- Double Cut
- 3/8" Cylindrical (Square)
- 3/8" & 1/2" Cylindrical (Radius) & Tree (Radius)
- 1/4" Shank

\$319⁰⁰
INC GST
P/N: B900 SCB5

Alpha

WHITE POINTER

Alpha



11 Piece Plumbers White Pointer Holesaw Kit

- 19, 22, 30, 35, 44, 51 & 57mm holesaws

\$195⁰⁰
INC GST
HSKPLW11



13 Piece Tradies White Pointer Holesaw Kit

- 16, 20, 22, 25, 32, 40, 51, 54, 64 & 92mm holesaws

\$189⁰⁰
INC GST
HSKTRW13



8 Piece TurboBORE Spade Bit Set

- 1/4" Hex Shank prevents slipping in chuck

\$45⁰⁰
INC GST
TS08-SET8



5 Piece 4 Cutter Auger Bit Set

- 4x faster than standard spade bits

\$73⁹⁵
INC GST
TS4C-SETS

Alpha ONSITE+

Alpha



10 Piece ONSITE+ Impact Step Tip Drill Set

- Sizes: 4.0 - 12.0mm

\$199⁹⁹
INC GST
SM10ST



25 Piece Gold Series Metric Drill Set

- 1.0 - 13.0mm in 0.5mm increments

\$199⁰⁰
INC GST
SM25PB



29 Piece Gold Series Imperial Drill Set

- 1/16 - 1/2" in 1/64" increments

\$229⁰⁰
INC GST
SI29PB



5 Piece Reduced Shank Metric Drill Set

- 14, 16, 18, 22 & 25mm

\$399⁹⁹
INC GST
RSM5

sutton

Superior Since 1917



BLUE BULLET

\$199⁰⁰
INC GST
P/N: D102 SM3

25pc Blue Bullet Drill Set

- 1.0 - 13.0 x 0.5mm
- Blue surface finish for ferrous applications
- Made from M2 HSS



BLUE BULLET

\$225⁰⁰
INC GST
P/N: D102 S3

29pc Blue Bullet Drill Set

- 1/16 - 1/2 x 1/64 rises
- Blue surface finish for ferrous applications
- Made from M2 HSS



COBALT

\$458⁰⁰
INC GST
P/N: D109 SM3

25pc Cobalt Drill Set

- 1.0 - 13.0 x 0.5mm
- 135° Split point
- Ideal for cast iron, bronze, hard steel & stainless steel
- Made from HSS Co.

FREIGHT CHARGES MAY APPLY



SHOP SMART - BUY SMART

DRILLING, CUTTING, ABRASIVES & TAPE

sutton

Superior Since 1917


\$139⁰⁰
INC GST
P/N: D202 LH10M
10pc Left Hand Cobalt Drill Set

- 1.0 – 10.0 x 1.0mm
- Suitable for general-purpose drilling and can also be used to drill out broken bolts


14pc ISO Straight Flute Tap & Drill Set

- Intermediate Taps: M3, M4, M5, M6, M8, M10, M12
- Drills: 2.5, 3.3, 4.2, 5.0, 6.8, 8.5, 10.2mm

\$199⁰⁰
INC GST
P/N: T385 0014

\$85⁰⁰
INC GST
P/N: M603 \$20L
10pc Screw Extractor Set

- Screw Extractors: #1-#5
- Left Hand Cobalt Drills: 2.0, 3.0, 4.0, 5.5, 7.5mm

sutton

Superior Since 1917


BLUE BULLET
\$199⁰⁰
INC GST
P/N: D102 SM3
25pc Blue Bullet Drill Set

- 1.0 – 13.0 x 0.5mm
- Blue surface finish for ferrous applications
- Made from M2 HSS


BLUE BULLET
\$225⁰⁰
INC GST
P/N: D102 S3
29pc Blue Bullet Drill Set

- 1/16 – 1/2 x 1/64 rises
- Blue surface finish for ferrous applications
- Made from M2 HSS


COBALT
\$458⁰⁰
INC GST
P/N: D109 SM3
25pc Cobalt Drill Set

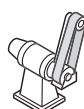
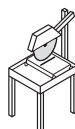
- 1.0 – 13.0 x 0.5mm
- 135° Split point
- Ideal for cast iron, bronze, hard steel & stainless steel
- Made from HSS Co.



Available in 50x915mm
 40# **280622** \$6.20 60# **280623** \$5.50
 80# **280624** \$5.50 120# **280665** \$5.00

CS416Y Zirconia linishing belts - 50x915mm

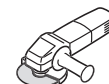
Very high aggressiveness and abrasive performance. Long service life also when used on materials that cause clogging.


\$5⁰⁰
PRICED FROM...

\$159⁰⁰
PRICED FROM...

350mm - **336221** - \$159.00
 400mm - **347486** - \$219.00

DT350U EXTRA Segmented blade

Product with laser-welded standard segments for universal use on general construction materials. Smooth, fast and low-vibration cutting with good service life.


\$139⁰⁰
P/N: 325378

125mm

DS600B Diamond cup grinding wheel

Double row cup grinding wheel for machining concrete and abrasive materials. Efficient dust extraction. Long service life.


NORTON Grey Aluminium Oxide Grinding Wheel

FAST SHARPENING
\$37⁹⁵
EACH
GREAT VALUE!

66253130429 200 x 25m - Crse/Med
 66253130430 200 x 25m - Med
 66253130582 200 x 25m - Med/Fine

- Suitable for general purpose grinding applications of steel and other ferrous metals

NORTON Metalite Cloth Handy Rolls

CONFORMABLE
\$69⁰⁰
EACH
HOT DEAL!

66623320799 50mm x 50m
 • 50mm x 50 metre
 • In Grits P60 - P320
 • Convenient dispenser
 • DIY or workshop

BEAR General Purpose Electrical Tape

\$2⁹⁵
EACH
GREAT BUY!
STRONG ADHESIVE

- 18mm x 20m
- Made from PVC to provide excellent stretch, conformability & durability
- Designed for insulating and joining electrical wiring
- Available in assorted colours

Ultra-Thin Cut-Off Wheels



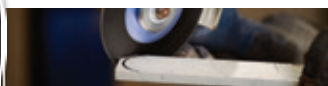
- Save time & money
- Wheel lasts longer
- Consistent quality
- Reduced burr
- Free of iron, sulphur & chlorine



A/N.	Size mm (inch)	Price
61341112	125 (5") x 1.0	\$2.50
61341122	125 (5") x 1.6	\$3.20



- No clogging up on soft or tough aluminium
- Special abrasive mixture (no fillers)
- No need to use waxes or oils
- Can be welded immediately



A/N.	Size mm (inch)	Price
61341115	125 (5") x 1.0	\$5.50
61341225	125 (5") x 1.6	\$5.20



5pc Engineer File Sets



Contains:
1x Hand
1x Half Round
1x Round
1x Square
1x 3 Square



- Long tool life
- Excellent surface quality
- Cut 1 - cross cut for coarse stock removal and roughing
- Cut 2 - cross cut for universal roughing and finishing

A/N.	Length mm	Cut	Price
11801531	200	Cut 1 - Bastard Cut	\$79.00
11801542	250	Cut 2 - 2nd Cut	\$89.00



3pc ALLROUND Burr Sets 1/4" Shank

- One cut, all materials
- Stock removal rate is up to 30% higher on steel than burrs with a conventional cross cut
- Reduced vibration & less noise



Contains:
1x Cylindrical End
1x Cylindrical Radius
1x Tree Radius

* Allround burrs in 1/4" shank are labelled as omni-cut (USA Branding)

Head Size
1/4"

\$105⁰⁰
A/N.: 26001045



Head Size
1/2"

\$195⁰⁰
A/N.: 26001046



CHAIN SHARP CS-X Chain Saw Sharpener

- Saw tooth & depth gauge sharpen in one operation
- Easy to maintain the correct filing angle
- Excellent for manual sharpening of saw chains
- Extends the operating life of the saw chain



\$74⁰⁰
GREAT VALUE!

Contains:
1x Sharpening Device
1x Depth Gauge File
2x Chainsaw Files

A/N.	Chain Pitch	Size mm (inch)
18600742	1/4" Low Profile	3.2 (1/8")
11098040	3/8" Low Profile	4.0 (5/32")
11098048	.325	4.8 (3/16")
11098051	3/8" Stand	5.16 (13/64")
11098055	.404	5.5 (7/32")



FOLLOW US ON FACEBOOK



ACCURATE
FOR LIFE



**E60 ROTATING
LASER KIT**

\$849⁰⁰

012-E60K



**LX25GP
LINE & DOT
LINE LASER GREEN BEAM**

\$599⁰⁰

012-LX25GP



**LX3DG
MULTI-LINE LINE
LASER GREEN BEAM**

\$799⁰⁰

012-LX3DG

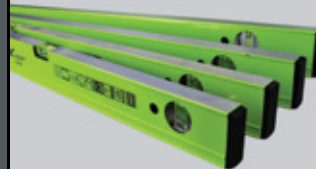
\$950⁰⁰

012-LX3DGD

Includes LD100
detector

**PURCHASE ANY OF THE
LASERS ON THE LEFT AND
RECEIVE 3X SPIRIT LEVELS
OF YOUR CHOOSING VIA
REDEMPTION!**

SCAN HERE TO
REDEEM



NORTON

SAINT-GOBAIN



NORTON Grey Aluminium Oxide Grinding Wheel



FAST
SHARPENING

\$37⁹⁵
EACH
GREAT VALUE!

66253130429 200 x 25mm - Crse/Med

66253130430 200 x 25mm - Med

66253130582 200 x 25mm - Med/Fine

- Suitable for general purpose grinding applications of steel and other ferrous metals

NORTON Metalite Cloth Handy Rolls



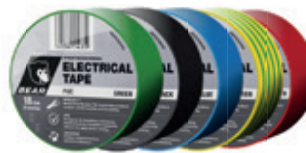
CONFORMABLE

\$69⁰⁰
EACH
HOT DEAL!

66623320799 50mm x 50mm

- 50mm x 50mm
- In Grits P60 - P320
- Convenient dispenser
- DIY or workshop

BEAR General Purpose Electrical Tape



\$2⁹⁵
EACH
GREAT BUY!

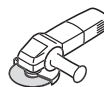
STRONG
ADHESIVE

- 18mm x 20m
- Made from PVC to provide excellent stretch, conformability & durability
- Designed for insulating and joining electrical wiring
- Available in assorted colours



BONUS!
Bonus Klingpods
RRP \$75

100 discs



\$3⁵⁰

P/N: 13402



A24R SUPRA Grinding disc - 125mm

With optimised recipe for use on steel. Also suitable for use on stainless steel. Large product range



125mm

369280 - 40#
369279 - 60#
369278 - 80#

\$15⁹⁵

CERAMIC

A60TZ SPECIAL Cutting disc - 125mm

High performance cutting off wheel for processing thin walled sections, pipes and small cross sections. Excellent cutting performance and long tool life. Suitable for cutting steel & stainless steel (inox).

\$209⁰⁰

P/N: 382061



**ADJUSTABLE
HYDRAULIC
STOOL**

P/N: GAHS

- 2 lockable wheels
- Metal Sub-frame

Size: 540L x 390W x 560H MM
Height Range: 450-560 MM

\$249

150 KG CAPACITY



UTILITY PARTS TROLLEY

P/N: GT3SP

- Soft PVC swivel wheels (2 lockable).

Size: 82 x 47 x 105cm

**130 KG
CAPACITY!**

\$249

GREAT VALUE!



MECHANICS CREEPER

P/N: GCR40

Size: 1005 x 470 x 135 MM
Ground Clearance: 45 MM
Weight: 5.3 Kg

\$179

150 kg MAX LOAD!



MAGNETIC BROOM

P/N: MB001

Telescopic
main shaft
Width: 377 MM
Handle Length:
720-1035 MM

\$135

GREAT VALUE!



TRADESMART MEMBERS: ACT: • Fyshwick NSW: • Albury • Banksmeadow • Bega • Beresfield • Broken Hill • Casino • Chipping Norton • Coffs Harbour • Coonamble • Cootamundra • Corowa • Cowra • Erina • Forbes • Goulburn • Gunnedah • Hay • Moorebank • Mudgee • Muswellbrook • Narrabri • Penrith • Silverwater • Tamworth • Tomago • Tumut • West Wyalong • Wetherill Park • Young NT: • Alice Springs QLD: • Blackwater • Bowen • Biloela • Bundaberg • Cairns • Caloundra • Charleville • Charters Towers • Chinchilla • Clermont • Coomera • Hughenden • Longreach • Mareeba • Moranbah • Mount Isa • Proserpine • Rockhampton • Richmond • Roma • Springsure • Stanthorpe • Toowoomba • Tully SA: • Berri • Edwardstown • Kilburn • Naracoorte • Penola TAS: • Derwent Park • Invermay • Ulverstone VIC: • Cobram • Dandenong • Geelong North • Horsham • Laverton Nth • Mildura • Robinvale • Shepparton • Traralgon • Tullamarine WA: • Albany • Bibra Lake • Busselton • Geraldton • Kalgoorlie • Maddington • Moora • Narrogin • Northam • Osborne Park • Port Hedland • Rockingham • Welshpool

• ALL PRICES INCLUDE GST • Some products are subject to plus freight costs where applicable • Some advertised products may not be available at all stores & maybe subject to availability. • Prices are valid while stocks last and we reserve the right to correct any errors or omissions without prior notice • Images shown throughout this catalogue are for illustrative purposes only - some items may vary.

